

# Precast Solutions

Product Guide



# Contents

<b>Lifting Systems</b>	<b>3</b>	Panel Bar chair	27	<b>Formwork System</b>	<b>44</b>
<b>Face Lifting Anchors</b>	<b>4</b>	Top Deck Chair	27	<b>Spartan™ System</b>	<b>45</b>
SwiftLift™ Foot Anchors	4	Bottom Beck spacer	27	Spartan™ Sideform	46
<b>Edge Lifting Anchors</b>	<b>5</b>	ReidBar™ Threaded Insert Chair	28	Spartan™ Sideform Rubbert End Caps	46
Reid™ SwiftLift™ Eye Anchors	5	Bar Deck Rail	28	Spartan™ Sideform Capping	47
Reid™ Hairpin Anchors	5	Circular Spacer	28	Spartan™ Rubbert Base Inserts	47
Reid™ Edge Lift Anchors	5	<b>Reid™ Shims</b>	<b>29</b>	<b>Titan™ III Magnet Clamp</b>	<b>48</b>
Reid™ 3Dx™ 7t Lifting Anchor	6	Full Panel Shim	29	Titan™ Magnet Adapter Plates	48
<b>Zeus Hanger Bracket</b>	<b>8</b>	H Packer	29	Spartan™ Sideform Joiner Plates	49
<b>Recess Formers</b>	<b>9</b>			<b>SwiftForm™</b>	<b>50</b>
SwiftLift™ Recess Formers – Plastic	9	<b>Precast Connections</b>	<b>30</b>	Aluminium Extruded Profile Section	51
SwiftLift™ Recess Round Formers – Steel	9	<b>Metric Threaded Inserts</b>	<b>31</b>	Reid™ Ectruded Sections	51
SwiftLift™ Recess Round Formers – Steel Articulated	9	<b>Metric Threaded Insert Accessories</b>	<b>32</b>	Sealant	51
Edge Lift Recess Formers – Rubber	9	Glue On Nailing Plates	32		
SwiftLift™ Recess Formers – Rubber	9	Reid Metric Plastic Nail Plates	32		
<b>Lifting Assemblies</b>	<b>10</b>			<b>Architectural Solutions</b>	<b>52</b>
Face Lifting Assemblies	10	<b>Chemicals Precast</b>	<b>33</b>	<b>Graphic Concrete</b>	<b>54</b>
Face Lifting Puddle-In Assemblies	10	<b>Release Agents</b>	<b>34</b>		
Edge Lift Assemblies	10	Nox-Crete Bio-Nox	34		
<b>SwiftLift™ Lifting Clutches</b>	<b>11</b>	Nox-Crete Release Agent #10	36		
Lifting Eye Clutches	12	Nox-Crete Formcoating E20	38		
Edge Lifting Clutches	14	<b>Bond Breakers</b>	<b>39</b>		
<b>Accessories</b>	<b>15</b>	Nox-Crete Silcoseal Select (solvent-based)	39		
SwiftLift™ Anchor Cover Plates	15	Nox-Crete Silcoseal Select (water-based)	40		
Panel Plates	15	<b>Maintenance &amp; Installation</b>	<b>41</b>		
Panel Pads	15	Nox-Crete Blast Off	41		
		<b>Application Sprayer Systems</b>	<b>42</b>		
<b>Reinforcing Systems</b>	<b>17</b>	Nox-Crete Perfect Concrete & Form Sprayer	43		
<b>ReidBar™ Systems</b>	<b>18</b>	Nox-Crete Hand pump Foamer	43		
ReidBar™ Grout Sleeve	18				
ReidBar™ Coupler	19				
ReidBar™ iPort Flange Anchor	20				
ReidBar™ Threaded Insert	22				
ReidBar™ Full Nut	23				
ReidBar™ Half Nut	23				
ReidBar™ Wing Nut	24				
ReidBar™ HDG Domed Plates & Spherical Washer	24				
<b>ReidBar™ Accessories</b>	<b>25</b>				
ReidBar™ Nail Plate	25				
<b>Reinforcing Support Chairs</b>	<b>26</b>				
Mesh Chair	26				
Fast Clip Bar Chair	27				

# Lifting Systems

**Reid have the longest serving history, and most enviable reputation, in New Zealand when it comes to Concrete Lifting Products.**

If your business is lifting precast concrete, the range of products offered by Reid is the most comprehensive, researched and tested by any New Zealand supplier.

Using Reid products gives you piece of mind that you are using the best, most reliable and most efficient.

Reid don't just supply the best product, but supply the highest standard of design support for every aspect of the precast and reinforcing process.

# Reid™ SwiftLift™ Anchors

## SwiftLift Foot Anchors

SwiftLift Foot Anchors are the most versatile and widely used anchors in the SwiftLift range. Made from forged high strength steel, the Foot Anchors are hot dipped galvanised for corrosion protection. 316 Stainless Steel anchors are available on request.

Part No.	Description	Length (mm)	Pack Qty
1FA035H	1.3 tonne	35mm	200
1FA045H		45mm	200
1FA055H		55mm	200
1FA066H		66mm	200
1FA085H		85mm	100
1FA120H		120mm	100
1FA240H		240mm	50
2FA055H	2.5 tonne	55mm	100
2FA065H		65mm	100
2FA075H		75mm	100
2FA090H		90mm	80
2FA120H		120mm	50
2FA170H		170mm	25
5FA075	5 tonne	75mm	40
5FA090		90mm	25
5FA095		95mm	35
5FA120		120mm	25
5FA145		145mm	25
5FA170		170mm	*20
5FA240		240mm	20
5FA480		480mm	10
10FA135	10 tonne	135mm	10
10FA150		150mm	10
10FA170		170mm	5
10FA200		200mm	8
10FA340		340mm	4
20FA500	20 tonne	500mm	2
32FA700*	32 tonne	700mm	1

\*Indent Only



### Foot Anchor Facts:

- Consistent with the Reid™ commitment to testing, SwiftLift™ Foot Anchors have been extensively tested in concrete comprising of over 500 individual tests, and consuming approximately 150 tonnes of concrete.

Analysis of the subsequent test data SwiftLift™ Foot Anchors having Working Load Limit capacities that are far higher and more accurate than those simply calculated using the CCD method.

### Reid™ SwiftLift™ Eye Anchor

SwiftLift Eye Anchors are a forged steel anchor for use with Reid SwiftLift clutches (LE). Eye anchors require supplementary reinforcement to achieve their full capacity. With higher load performance, the Anchors provide deeper anchorage and increased load capacity in thin wall or low strength concrete elements. They are ideal for bridge beams and other heavy precast concrete elements. Hot dip galvanised for corrosion protection.

Part No.	Description	Length (mm)	Pack Qty
1REA050	1.3 tonne	50mm	200
2REA090	2.5 tonne	90mm	75
5REA120	5 tonne	120mm	25
10EA180	10 tonne	180mm	10
20EA250*	20 tonne	250mm	4



\*Indent Only

### Reid™ Hairpin Anchors

The Reid Hairpin Anchor with feet eliminates the requirement of a shear bar and removes the risk of hanger bars being left out during installation. The HPAWF is forged for added strength & hot dipped galvanised for corrosion protection; beneficial in thin panels where concrete cover is minimal. Its thick, long hairpin legs provide secure lifting in both shear and tension applications, even in thin concrete panels (minimum panel thickness is 100mm). Hot dipped galvanised for corrosion protection, beneficial in thin panels where concrete cover is minimal.

Part No.	Description	Length (mm)	Pack Qty
2HPAWFP	2.5 tonne	264mm	ea



### Reid™ Edge Lift Anchors

The Reid Edge Lift Anchor is a forged steel anchor for use with Reid ring clutch (ELALE) for edge lifting precast concrete panels. The anchor requires hanger bars for tension loads. Use with the Reid Recess Former ELARRF. Designed for thin panels, the ELAWF anchor also has a slot for a perimeter bar. Hot dip galvanised for corrosion protection & built in anti-shear feature with feet.

Part No.	Description	Length (mm)	Pack Qty
2ELAWF	2.5 tonne	100mm	25
7ELAWF	7 tonne	114mm	10
10ELAWF	10 tonne	161mm	5



# Reid™ 3Dx™ 7t Edge Lift Anchors



**3Dx™ 7t Edge lift anchors do not require a shear bar or specific install methods to achieve full capacity; removing cost and risk from every product produced.**

They have been designed specifically for New Zealand conditions and to perform in New Zealand concrete panels reinforced with New Zealand reinforcing bar.



**Figure 1:**  
**Reid™ 3Dx™ 7t**  
**Edge Lift Anchors**



## Edge Lift Hairpin Anchor Features

- Forged I Beam design removes the need for shear bars & increases bearing area vs 7HPAWFP
- Current 7ELARRF voids & 7ELALE clutches are backwards compatible
- Hot dip galvanised to AS/NZS 4680
- Epoxy coated to mitigate galvanic reactions in precast panel production, which can lead to poor quality finishes. Yellow colour allows for easy visual QA checks.
- Simple & Easy to use, no extra reinforcement or difficult install methodology.
- Tested to NZ conditions, using NZ materials.



# Specifications & Product Markings

The 3DX7N anchor has a 7t WLL and is forged, hot dip galvenised and then painted. It's patented I-beam design & toothed design allow the anchor to be more compact than the 7HPAWFP. The 3DX7N is specifically designed for use in low and early strength concrete, allowing the precaster the shortest possible cycle times.



## Part Number & Pack Quantity's

Part No.	WLL	Length (mm)	Pack Qty
3DX7N	7t	283	200 crate

## Reid™ 3DX7N Anchor Markings



Working Load Limit



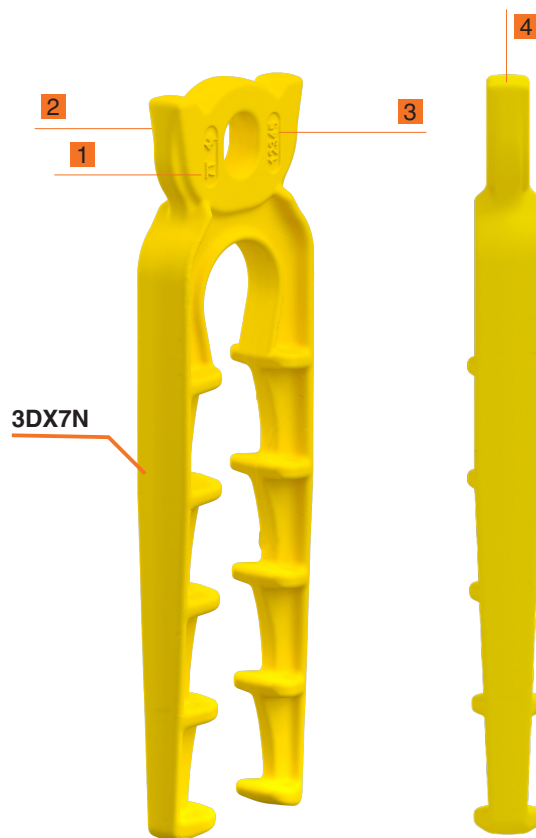
Reid Logo



Batch Number



Whole of anchor epoxy coated



# Zeus Hanger Bracket

**Zeus has been developed as a cost-effective combined support and lifting bracket for flange hung 'Double Tee' and 'Ribbed' precast floor units greater than 150mm deep.**

It is the only hanger bracket to date that has been tested to the 'Jenson Protocol' which recognises the combined diaphragm and beam rotation stresses induced in flooring units under extreme loading.

Zeus is the best practice alternative to the "pigtail loop" detail which is hard to justify using rational analysis.



## Zeus Key Features:

- Secure in plastic hinge zones and incorporates a life safety strap.
- Only bracket to have been tested and approved in NZ for seismic loads.
- Accommodates building movement such as creep, temperature and concrete shrinkage.
- Two part system with adjustable leg lengths to suit varying sizes of precast unit depths.
- Hot Dipped Galvanised for durability from corrosion.

**Easily assembled in the mould and incorporates trimmer bar holes for reinforcing.**

- Dual purpose reinforcing and lifting system, lifted with 7ELALE Hairpin clutch and uses 7ELARRF Recess Former.
- Working Load Limit of the anchor is 7 tonne as per the NZ Code of Practice.

## Product Codes

Part No.	Description	Depth of Rib / Tee
ZEUSZ1	Z1 Hanger Bracket	>150mm -200mm
ZEUSZ2S	Z2 Leg only	250 - 300mm
ZEUSZ3S	Z3 Leg only	350 - 450mm

# RECESS FORMERS

## Reid™ SwiftLift™ Recess Formers – Plastic

Part No.	Description	Pack Qty
2PR	2.5 tonne Plastic Former	500
5PR	5 tonne Plastic Recess Former	200
2PRFRE	2.5 tonne Plastic Reduced Recess Former	150



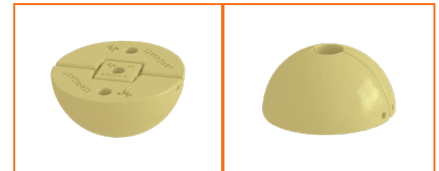
## SwiftLift™ Recess Round Formers – Steel

Part No.	Description	Pack Qty
1SRFRO	1.3 tonne	8
2SRFRO	2.5 tonne	8
5SRFRO	5 tonne	4
1RR	Rubber Ring used with 1SRFRO	100
2RR	Rubber Ring used with 2SRFRO	100
5RR	Rubber Ring used with 5SRFRO	100



## SwiftLift™ Recess Formers - Steel Articulated

Part No.	Description	Pack Qty
1SRFROART	1.3 tonne	8
2SRFROART	2.5 tonne	8
5SRFROART	5 tonne	4



## Edge Lift Recess Formers - Rubber

Part No.	Description	Pack Qty
2ELARRF	2.5 tonne (Orange)	50
7ELARRF	7 tonne (Black)	50
10ELARRF	10 tonne (Blue)	10

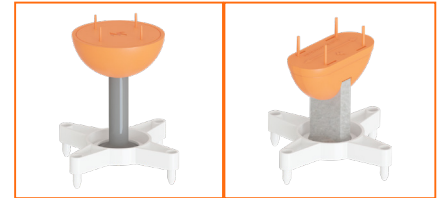


## SwiftLift Recess Formers - Rubber

Part No.	Description	Pack Qty
1RFRO	1.3 tonne	8
2RFRO	2.5 tonne	4
5RFRO	5 tonne	4
10RFRO	10 tonne	4
20RFRO	20 tonne	4
32RFRO	32 tonne	4

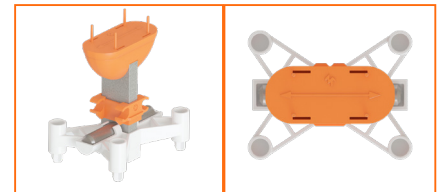


# Lifting Assemblies



## Face Lifting Assemblies

Part No.	Description	Anchor Load Group (T)	Panel Thickness (mm)	Pack Qty
5PCHAIR150	<b>Face Lifting Assemblies</b> (Compatible with SwiftLift Clutch range)	5	150mm	20
7PAPCHAIR150	<b>Plate Anchor Assemblies</b> (Compatible with Hairpin/Plate Clutch range)	7	150mm	20



## Face Lifting Puddle-In Assemblies

Part No.	Description	Anchor Load Group (T)	Panel Thickness (mm)	Pack Qty
FL050150B	<b>Plate anchor Assembly</b> (compatible with 7ELALE or 3DX7NLC)	5	150mm	16
FL050175B		5	175mm	16
FL050200B		5	200mm	12
7PA125PRF	<b>Plate Anchor Puddle-In Assemblies</b> (Compatible with Hairpin/Plate Clutch range)	7	150mm	25

### NOTES:

---



---



---



---



---



---



---

# SwiftLift™ Lifting Clutches

The Reid™ range of SwiftLift™ Clutches have been exclusively designed and approved for use with Reid SwiftLift Anchors and accessories. They are available in a range of Working Load Limits.

SwiftLift clutches are designed so that they cannot spontaneously disengage whilst the system is under load at any orientation, provided they are correctly connected to the head of the correct anchor in the recess. When the lift is complete and the load released, the SwiftLift Clutch is quickly and simply disengaged.

Reid SwiftLift Clutches are not designed to be used with other lifting products as there is no guarantee of compatibility. All Reid products have the Reid logo stamped on them for ease of identification.

Department of Labour Code of Practice dictates that clutches be checked by a competent person on a regular basis and a record should be kept of all checks.



## Types of Lifting



### Flat (or Top) Lift:

Where the initial direction of the lift is in-line with the anchor axis. The lift puts the anchor into tension only.



### Face (Shear) Lift:

Where the initial direction of the lift is perpendicular to the axis of the anchor. The lift applies a shear load only to the anchor



### Edge Lift:

The initial direction the lift is transverse to the anchor axis, putting the anchor into shear at the beginning of the lift and moves into tension as the lift is completed.



### Rotational Edge Lift:

The initial lift is shared by a number of anchors (typically 3 or 4). This load puts the anchors into in-plane shear at the beginning and transitions into tension as the load is rotated for placement.

# Reid™ SwiftLift™ Lifting Eye Clutches



Reid SwiftLift™ Lifting Clutches, from 1.3t to 32t WLL comply with Worksafe New Zealand Good Practice Guidelines "Safe work with precast concrete"- October 2018 (NZ GPG 2018).

Reid's Clutches are manufactured under strict quality requirements using the highest quality steel and manufacturing processes. All SwiftLift™ Clutches exceed the minimum requirements of Safe work with precast concrete and are proof tested to FOS 2 in all directions as per the guide.



Figure 1:  
SwiftLift™ 5T Clutch

5LE



Please refer to "Reid SwiftLift & Edge Lifting Clutches: Discard Criteria" for important safety information regarding this product range.



# SwiftLift™ Lifting Eye Clutches

SwiftLift Lifting Eye Clutches cover the full SwiftLift range from 1.3t to 32t WLL.

SwiftLift Lifting Eye Clutches have been designed so that they cannot spontaneously disengage whilst the system is under load at any orientation, provided they are correctly engaged with the correct system. When the lift is complete and the load released, the SwiftLift Clutch is quickly and simply disengaged.

Part No.	Pack Qty	WLL (Max)
1LE	1	1.3t
2LE	1	2.5t
5LE	1	5.0t
10LE	1	10.0t
20LE	1	20.0t
32LE	1	32.0t



## SwiftLift Lifting Clutch markings



WLL per clause 10,11



Reid batch number (on underside)



Reid name & symbol per clause 10,11



Reid name & symbol per clause 10,11 (on side of sphere)



Unique identifying serial number per clause 10,11



As per NZ Good Practice Guide - Safe work with precast concrete 2018 clause 10.11, all clutches need to be permanently marked with a unique identifier (traceable to proof tests), the manufacturers symbol or name, and the WLL or compatible anchor identified. All Reid SwiftLift Lifting Clutches comply with this clause.

**Note:** Clutch markings shown are typical of 1, 2 & 5t clutches. Markings on 10, 20 and 32t clutches may vary from that shown here.

# Reid™ SwiftLift™ Edgelifft™ Clutches



Reid™ SwiftLift™ Edgelifft Clutches - 2ELALE, 7ELALE and 10ELALE\* comply with NZ Good Practice Guide "Safe work with precast concrete"- October 2018 (NZ GPG 2018).

They are manufactured under strict quality requirements using the highest quality steel and manufacturing processes. All SwiftLift™ Edgelifft Clutches are proof tested prior to sale and are uniquely identified by a proof tag.



Figure 1:  
Edgelifft Clutches



**\*Note:**

Where anchor load exceeds 9.4t a Reid™ Engineer shall be consulted.

Please refer to "Reid™ Swiftlift™ Lifting Eye & Edge Lifting Clutches: Discard Criteria" for important safety information regarding this product range.



# SwiftLift™ Edgelifit Clutch

The Reid™ range of SwiftLift™ Edgelifit Clutches have been exclusively designed, tested and approved for use with Reid™ Anchors and accessories. They are available in a range of Working Load Limits.

SwiftLift™ clutches are designed so that they cannot spontaneously disengage whilst the system is under load at any orientation, provided they are correctly engaged with the correct lifting system. When the lift is complete and the load released, the SwiftLift™ Edgelifit Clutch is quickly and easily disengaged.

Part No.	Pack Qty	WLL (Max)
2ELALE	1	2.5t
7ELALE	1	7.0t
10ELALE	1	10.0t
3DX7NLC	1	7.0t



There are no products listed in this document which are subject to a warning or ban under the Building Act 2004

## SwiftLift Lifting Clutch markings

**1**

WLL per clause 10.11

**2**

Reid name & logo per clause 10.11

**3**

Unique identifying serial number per clause 10.11

**4**

batch no. and test no.

**5**

Proof Load Tag

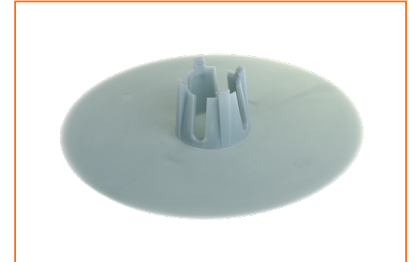
**Note:** Clutch markings above are typical of 2ELALE and 7ELALE. Markings on 10ELALE clutch may vary from above.

# Precast Accessories

## SwiftLift™ Anchor Cover Plates

Designed to cover recess & anchors on precast faces.

Part No.	Description	Anchor load Group (T)	Pack Qty
5TILTCOVER	Paintable Plastic Covers for SwiftLift Anchors	5	200



## Panel Plates

The use of colour coded plates allows easy identification to determine which precast elements belong to each job. Plates are all 180mm x 100mm

Part No.	Description	Pack Qty
FWPLATEW	White Panel Plate	60



## Panel Pads

Eliminates staining and other issues associated with curing against precast elements.

Part No.	Description	Pack Qty
PANELPADS	Panel Pads 100mm x 100mm	500



## NOTES:

---



---



---



---



---



---



---

# Reinforcing Systems

Reinforcing products from Reid Construction Systems provide simple solutions for structural concrete connection, reducing both labour and material costs.

Using ReidBar™ and ReidBar™ components provides many benefits for Precasters and Builders including:

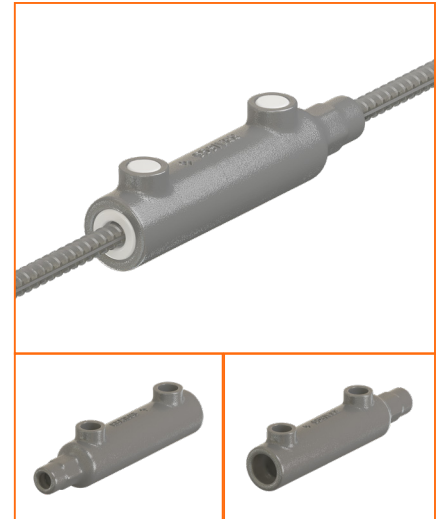
- Full range of threaded fittings for joining, anchoring and terminating.
- Simplifies the detailing and fixing of rebar.
- Reduces bar congestion problems; laps, cogs, eliminated in heavily reinforced areas.
- Eliminates cast-in starter bars to simplify transport and handling.

# ReidBar™ Grout Sleeve

ReidBar™ Grout Sleeves enable designers to create efficient vertical construction joints between precast concrete elements.

ReidBar™ Grout Sleeves provide a mechanical splice between panel to panel reinforcement.

Unlike conventional lapping utilising drossbach system, ReidBar™ Grout Sleeves rely on significantly shorter embedment depths, therefore reducing onsite hazards caused by long protruding starter bars. Also, ReidBar™ Grout Sleeves are generally slimmer than the equivalent drossbach system, therefore minimising reinforcing congestion in precast panels.



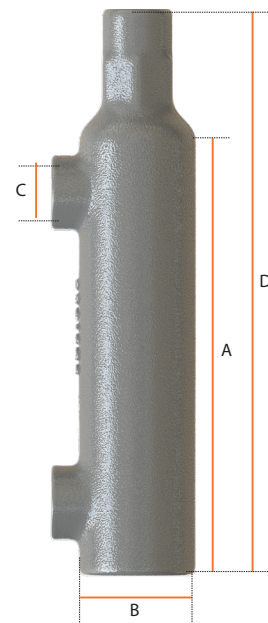
## ReidBar™ Grout Sleeve Features:

- **Assurance that ReidBar Grout Sleeves are ‘Deemed to Comply’ with the New Zealand Building Code\*:** ReidBar Grout Sleeves are marked with the CodeMark Scheme Mark of Conformity
- **Remove Lapping:** ReidBar™ As a continuous reinforcing bar mechanical splice solution, ReidBar™ Grout Sleeves require significantly shorter starter bar lengths than conventional lapped connections.
- **Easy Transportation:** Shorter starter bar lengths lead to easier transportation as the overall dimensions of concrete elements to be transported are reduced
- **Easy Storage:** Shorter starter bar lengths lead to easier storage of concrete elements at the manufacturing facility before delivery
- **Quality Assured:** Independent review of our manufacturing and quality control processes to monitor our ability to consistently produce the product for optimum quality and performance.

## ReidBar™ Grout Sleeves CodeMark certificate

Available on the JAS-ANZ website, the certificate is located by entering the certificate number CM1024.

<https://www.jas-anz.org/our-directory/codemark-certified-organisations>



## ReidBar™ Grout Sleeve Product Specifications

Part No.	Suits	Min Strength (kN)	(A) Max Internal Embedment	(B) Body ID (mm)	(C) Internal Grout Hole Diam (mm)	(D) Tube Length (mm)
RB12GS	RB12	>78.0	150	28-40	21	200
RBA16GS	RB16	>138.8	190	32	21	240
RB20GS	RB20	>216.7	224	40	21	290
RB25GS	RB25	>338.8	274	48	21	360
RB32GS	RB32	>554.8	320	55	26	445



# ReidBar™ iPort Flange Anchor



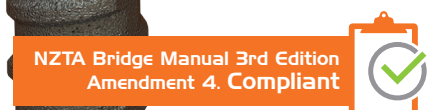
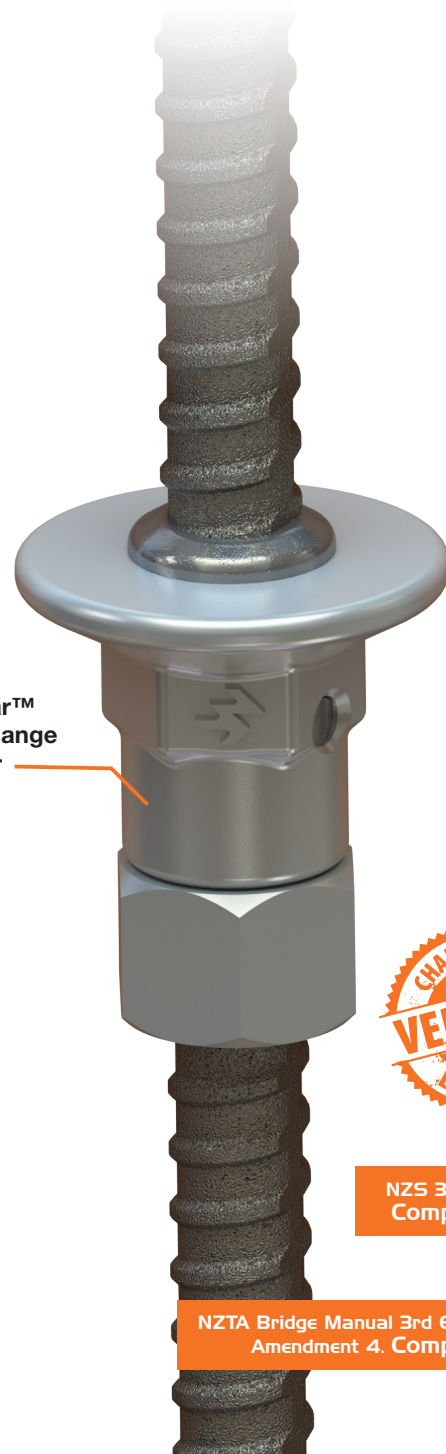
The ReidBar™ iPort Flange Anchor provides a tested and Bridge Code compliant headed anchorage solution with an improved epoxy injection system supporting increased quality control, safe handling of epoxy and simplified labour efficient installation.

Available in steel, a ReidBar™ threaded anchoring solution that is independently tested to demonstrate compliance with the performance requirements of NZS 3101 Amendment 3 and of the NZTA Bridge Manual 3rd Edition Amendment 4 is now available to the New Zealand market.

## ReidBar™ iPort Flange Anchor Features & Benefits

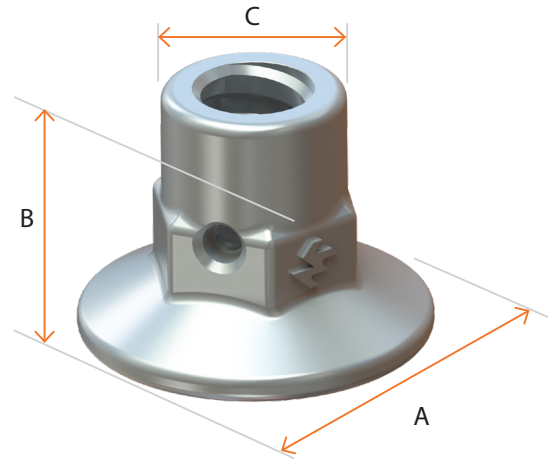
- Compact headed anchor system which allows anchoring of reinforcing at heavily congested construction joints, such as pile caps and beam column joints.
- Provides alternative anchoring option when there is insufficient space for standard hooks.
- Flange Design for true headed anchor capacity.
- Injection “iPort” epoxy delivery system.
- Injection “iPort” allows for additional Mid Bar applications.
- Coarse threaded system requires no post threading.
- Injection process provides a visual indicator of installed quality.

ReidBar™ iPort Flange Anchor



# Product Specifications

## ReidBar™ iPort Flange Anchor



Part No.	Description	Foot diameter (A) (mm)	Length (B) (mm)	Body Diameter (C) (mm)	Hex Size A/F (mm)
RB12FAIPS	REIDBAR 12MM FLANGE ANCHOR IPORT STEEL	39	50	22	22.6
RB12FAIPSG	REIDBAR12MMFLANGEANCHORIPORTSTEELGALV	39	50	22	22.6
RBA16FAIPS	REIDBAR 16MM FLANGE ANCHOR IPORT STEEL	58	50	35	36
RBA16FAIPSG	REIDBAR16MMFLANGEANCHORIPORTSTEELGALV	58	50	35	36
RB20FAIPS	REIDBAR 20MM FLANGE ANCHOR IPORT STEEL	67	50	35	36
RB20FAIPSG	REIDBAR20MMFLANGEANCHORIPORTSTEELGALV	67	50	35	36
RB25FAIPS	REIDBAR 25MM FLANGE ANCHOR IPORT STEEL	83	80	42	42
RB25FAIPSG	REIDBAR25MMFLANGEANCHORIPORTSTEELGALV	83	80	42	42
RB32FAIPS	REIDBAR 32MM FLANGE ANCHOR IPORT STEEL	92	95	55	57
RB32FAIPSG	REIDBAR32MMFLANGEANCHORIPORTSTEELGALV	92	95	55	57

## ReidBar™ Threaded Inserts SG Ductile Cast Iron Range:

System to anchor ReidBar™. Commonly utilised for floor to wall or floor to panel terminating connections.

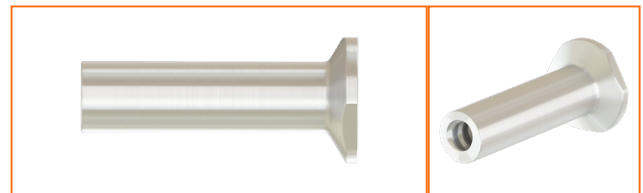


Part No.	Description	Foot Diameter (A) (mm)	Length (B) (mm)	Cross Hole Diameter (mm)	Pack Qty
RB12TI	ReidBar Insert for RB12	38	100	N/A	20
RBA16TI	ReidBar Insert for RBA16	50	118	N/A	20
RB20TI	ReidBar Insert for RB20	64	148	N/A	15
RB12TIG*	ReidBar Insert for RB12 (HDG)	38	100	N/A	20
RB16TIG*	ReidBar Insert for RBA16 (HDG)	50	118	N/A	20
RB20TIG*	ReidBar Insert for RB20 (HDG)	64	148	N/A	15
RB12RI	ReidBar Rebate Insert for RB12	38.75	78	14.5	60

\*Lead time applies for Hot Dip Galvanised components

## ReidBar™ Threaded Inserts Steel Range:

System to anchor ReidBar™. Commonly utilised for floor to wall or floor to panel terminating connections.



Part No.	Description	Foot Minor Diameter (A) (mm)	Length (B) (mm)	Body Diameter (mm)	Pack Qty
RB12TIS	12mm Steel ReidBar Threaded Insert	37	101	22	60
RBA16TIS	16mm Steel ReidBar Threaded Insert	53	118	30	25
RB20TIS	20mm Steel ReidBar Threaded Insert	68	149	35	10
RB12TISG	12mm Steel ReidBar Threaded Insert (HDG)	37	101	22	60
RBA16TISG	16mm Steel ReidBar Threaded Insert (HDG)	53	118	30	25

## ReidBar™ Full Nut

System to fix and/or tighten ReidBar™.



Part No.	Description	Length (mm)	Hex A/F	Pack Qty
RB12N	ReidBar Nut for RB12	40	25	50
RBA16N	ReidBar Nut for RBA16	45	30	20
RB20N	ReidBar Nut for RB20	55	36	55
RB25N	ReidBar Nut for RB25	65	46	20
RB32N	ReidBar Nut for RB32	82	55	10
RB12NG*	ReidBar Nut for RB12 (HDG)	40	25	50
RBA16NG*	ReidBar Nut for RBA16 (HDG)	45	30	20
RB20NG*	ReidBar Nut for RB20 (HDG)	55	36	55
RB25NG*	ReidBar Nut for RB25 (HDG)	65	46	20
RB32NG*	ReidBar Nut for RB32 (HDG)	82	55	10

\*Lead time applies for Hot Dip Galvanised components

## ReidBar™ Half Nut

System to fix and/or tighten ReidBar™ Components.  
Integral component of ReidBar™ iPort Flange Anchor System.



Part No	Description	Pack Qty	Length (mm)	Hex A/F
RBA12NHG	16mm ReidBar Half Nut (Galv.)	280	17-22	25
RBA16NHG	16mm ReidBar Half Nut (Galv.)	200	19-24	30
RB20NHG	20mm ReidBar Half Nut (Galv.)	110	22-28	36
RB25NHG	25mm ReidBar Half Nut (Galv.)	40	30-36	46
RB32NHG	32mm ReidBar Half Nut (Galv.)	30	38-44	55



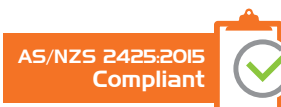


# Reid™ Plastic Chairs & Spacers

## Reid™ Mesh Chairs

The mesh chair is designed to clip easily to the intersection of the mesh, providing greater strength and stability. Mesh chairs can be used with extensions for added height if required.

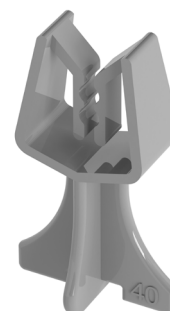
Part	Description	Pack Qty
MESH20	Clip on Mesh Chair 20mm	100
MESH25	Clip on Mesh Chair 25mm	100
MESH30	Clip on Mesh Chair 30mm	100
MESH40	Clip on Mesh Chair 40mm	100



## Reid™ Fast Clip Bar Chairs

Fast Clip Bar Chairs accommodate bar sizes from 4mm to 20mm. Each chair is identified by cover and can be used with extensions for added height and stability if required.

Part	Description	Pack Qty
FCB20	Fast Clip Bar Chair 20mm	100
FCB25	Fast Clip Bar Chair 25mm	100
FCB30	Fast Clip Bar Chair 30mm	100
FCB35	Fast Clip Bar Chair 35mm	100
FCB40	Fast Clip Bar Chair 40mm	100
FCB45	Fast Clip Bar Chair 45mm	100
FCB50	Fast Clip Bar Chair 50mm	100
FCB60	Fast Clip Bar Chair 60mm	100
FCB65	Fast Clip Bar Chair 65mm	100
FCB75	Fast Clip Bar Chair 75mm	100



## Reid™ Panel Bar Chairs

Designed to support single layered mesh. The easy push on clip mechanism allows the chair to swing into a vertical position when lowering the mesh into the form and suits all mesh sizes including N12 bars. Dimples located at the base of the legs ensures minimum exposure.

AS/NZS 2425:2015  
Compliant



Part	Description	Pack Qty
CP25/40	Bar Chair Panel 25/40mm	200
BCPANEL3040	Bar Chair Panel 30/40mm	100
BCPANEL5060	Bar Chair Panel 50/60mm	100
BCPANEL6575	Bar Chair Panel 65/75mm	100
BCPANEL90100	Bar Chair Panel 90/100mm	100



## Reid™ Top Deck Chairs

The Top Deck Chair supports both top mesh and top reinforcing bars in suspended decks, thick precast elements and tilt-up panels where stability is critical. Unlike wire alternatives, the Top Deck Chair offers a combination of heights, will not rust, will not spread under normal construction loads and can still be handled in extreme heat. Top Deck Chair features a cross bar between the dual supports which provides for the wire-tying of reo, if required.

AS/NZS 2425:2015  
Compliant



Part	Description	Pack Qty
BPDST090100	Top Deck Chair 90/100mm	50
BPDST110120*	Top Deck Chair 110/120mm	50
BPDST130140*	Top Deck Chair 130/140mm	50

\*indent only



## Reid™ Bottom Deck Spacers

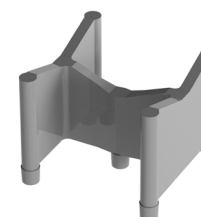
The Bottom Deck Spacer has been designed to support both mesh and large bars in suspended decks, precast beams, panels, and tilt-up applications. As an alternative to wire chairs and concrete spacers, the Bottom Deck Spacers are lightweight, offer dual/combination heights and will not rust. Strong and stable, the spacers have 5 small dimples that provide minimum visibility or exposure. The dimples also allow for tie wire to be placed under the spacer for fixing reo, if required. The cradle accommodates a wide range of bar diameters and saves steel-fixing time in horizontal applications. Easy placement of bar on the cradle reduces fatigue during installation.

AS/NZS 2425:2015  
Compliant



Part	Description	Pack Qty
BPDS2530*	Bottom Deck Spacer 25&30mm	100
BPDS3540*	Bottom Deck Spacer 35&40mm	100
BPDS4550*	Bottom Deck Spacer 45&50mm	100

\*indent only



## ReidBar™ Threaded Insert Chair

Designed to enable ReidBar inserts to be easily used for near face applications in precast elements. Used in conjunction with the appropriate nail plate, the Threaded Insert Chair is fully adjustable to suit 125, 150, 175, and 200mm panel thicknesses and can be trimmed for intermediate thicknesses.

Part	Description	Pack Qty
TICHAIR	Threaded Insert Chair	90

**NOTE:**

- 1: The chair will take all inserts from RB12 to RBA20.
- 2: Use appropriate size nail plate to attach insert into chair.
- 3: Can be used for all metric and coil thread inserts with appropriate nailing plate.

AS/NZS 2425:2015  
Compliant



## Reid™ Deck Rail

The Reid™ Deck Rail is a continuous plastic spacer for formwork applications. In addition to the sets of vertical legs at 75mm centres, centrally positioned support legs provide the Deck Rail with the stability and strength required on construction sites.

Part	Description	Pack Qty
BDR025	Deck Rail 25mm High	25
BDR030	Deck Rail 30mm High	25
BDR035	Deck Rail 35mm High	25
BDR040	Deck Rail 40mm High	25
BDR045*	Deck Rail 45mm High	25
BDR050*	Deck Rail 50mm High	25
BDR065*	Deck Rail 65mm High	25
BDR100*	Deck Rail 100mm High	25
BDRBASE*	Deck Rail Base 740mm x 90mm	50

\*indent only

AS/NZS 2425:2015  
Compliant

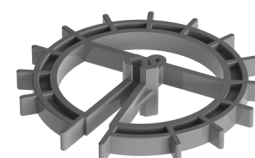


## Reid™ Circular Spacers

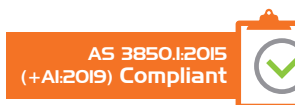
The unique design offers accurate cover for 360 degrees. It will not twist when in position due to the in-built sleeves which adjusts to hold the bar firmly. As the size of the bar increases the cover remains the same.

Part	Description	Pack Qty
CB20CR12	Circular Spacer 20mm (8-12mm wire)	100
CB25CR12	Circular Spacer 25mm (8-12mm wire)	100
CB30CR12*	Circular Spacer 30mm (8-12mm wire)	100
CB40CR12	Circular Spacer 40mm (8-12mm wire)	100
CB50CR12*	Circular Spacer 50mm (8-12mm wire)	100
CB75CR12	Circular Spacer 75mm (8-12mm wire)	100
CC30CR20*	Circular Spacer 30mm (16-20mm Bar)	100

\*indent only



# Reid™ Shims



## Reid™ Full Panel Shim

Part	Shim Thickness	Dimensions (mm)	Working Load Limit (WLL)	Colour	Pack Qty
SHIM01 L	1mm	150 x 100	20t	Brown	100
SHIM02 L	2mm	150 x 100	20t	Blue	200
SHIM03 L	3mm	150 x 100	20t	Green	100
SHIM05 L	5mm	150 x 100	20t	Yellow	100
SHIM10 L	10mm	150 x 100	20t	Black	40
SHIM15 L	15mm	150 x 100	20t	Grey	40
SHIM20 L	20mm	150 x 100	20t	White	30

Reid™ Full Panel Shims have been independently tested & rated with a 20t Working Load Limit (WLL) as determined in accordance with AS3850.12015 (+A1 2019).



## Reid™ H Packer

Part	Shim Thickness	Dimensions (mm)	Working Load Limit (WLL)	Colour	Pack Qty
HPACK1.5mm	1.5mm	98 x 42 x 1.5	20t	Brown	100
HPACK2.0mm	2mm	98 x 42 x 2	20t	Blue	100
HPACK3.0mm	3mm	98 x 42 x 3	20t	Green	100
HPACK5.0mm	5mm	98 x 42 x 3	20t	Yellow	100
HPACK6.0mm	6mm	98 x 42 x 6	20t	White	100
HPACK10.0mm	10mm	98 x 42 x 10	20t	Black	100



# Precast Connections

Not only do Reid offer an extensive range of connections to suit almost every application, but also a range that delivers consistent reliability and quality, supported with technically superior design information.

Extensive research, development and testing are invested in all Reid Threaded Inserts with performance data derived and verified through hundreds of tests, utilising both in-house and independent testing facilities.

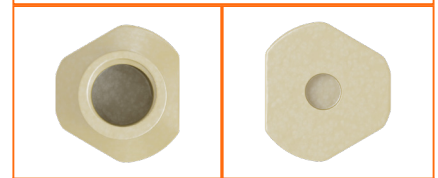
# Metric Threaded Inserts

Reid™ Threaded Metric Inserts (TIMS) are cast into concrete to provide fixing points for attachments and structural members. The TIM is the original Reid design with a large foot at the base of the insert (see nominal dimensions).

Made from High grade carbon steel, Reid recommends the Gold passivated zinc coating to AS1789:2003 for internal applications and Hot Dip Galvanised for external applications.

## Metric Threaded Insert Applications:

- Medium to heavy duty applications.
- Use in near or far face applications with our range of accessories
- Structural Bolted Connections
- Curtain wall and panel facades.
- Temporary precast panel bracing points.
- Temporary &/or HVAC service equipment connections.



## Metric Threaded Inserts Key Features:

- No cross bar required to develop rated capacity.
- Resists dynamic loading.
- Plastic nail plates simplify installation and minimise fouling during the concrete pour.



## Metric Threaded Insert Advantages:



### Easy and simple to use

- Improved security and reliability for slip free anchorage.
- No cross bar required to develop rated capacity.

## Product Codes

Part No.	Description	Thread Size Diameter	Cross Hole Diameter	Thread Depth	Anchor Length	Pack Qty
TIM16X75	Zinc Passivated TIMS	M16	11/11.6mm	35mm	75mm	25
TIM20X75		M20	15/15.5mm	32/33mm	75mm	50
TIM10X40G	Galvanised TIMS	M10	8.8/9.2mm	15mm	40mm	100
TIM12X50G		M12	9.1/9.5mm	20mm	50mm	100
TIM16X75G		M16	11/11.6mm	35mm	75mm	25
TIM20X75G		M20	N/A	32/33mm	75mm	50
TIM20x120G#		M20		47mm	120mm	20
TIM24X100G		M24	20/20.5mm	45mm	90mm	20



\*Stainless Steel Inserts available on request. # Made from Ductile Cast Iron

# Metric Threaded Insert Accessories

## Reid Metric Plastic Nail Plates

For use with timber formwork.

Part No.	To Suit	Pack Qty
NP10	M10	100
NP12	M12	100
NP16	M16	100
NP20	M20	100
NP24	M24	100



## Metric Plastic Glue On Nail Plates

Glue on nailing plates are used to attach ferrules to steel formwork or casting beds, where screwing or drilling is not desired. Designed to be used with Reid Double Sided Spots, they have a recess on the bottom side that allows for easy removal after the panel has been lifted.

Part No.	To Suit	Pack Qty
GP12	M12	100
GP16	M16	100
GP20	M20	100

**Double Sided Spots to Suit:**

Part No.	Diam Pack	Pack Qty
NPSPOT	58mm	100



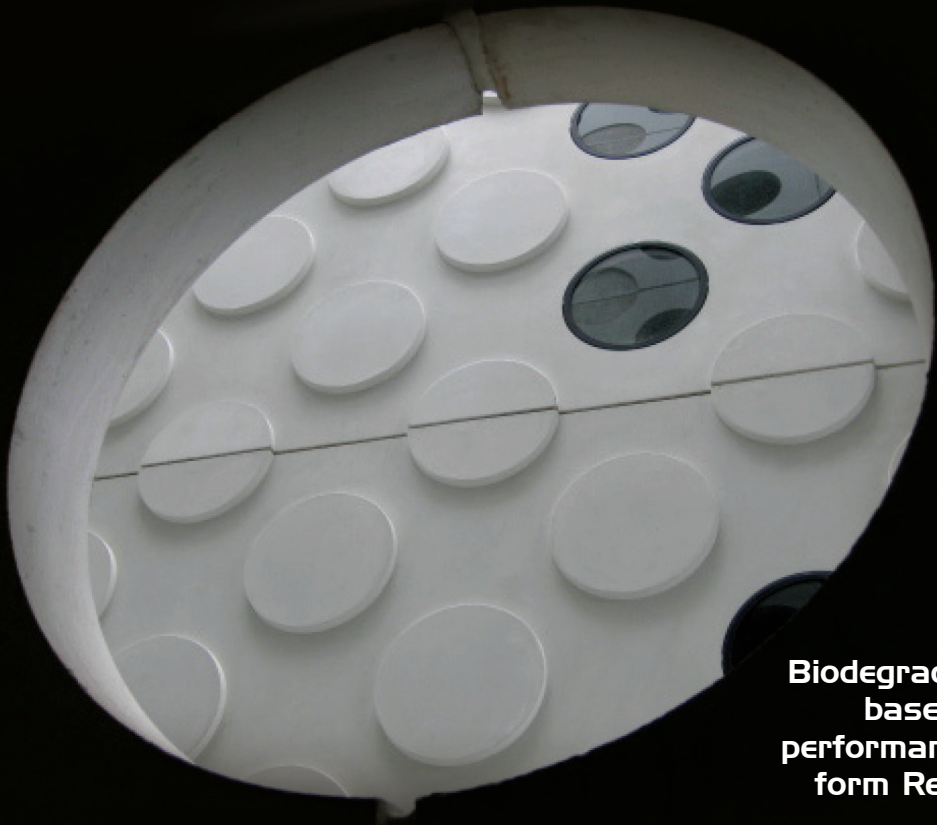
# Chemicals Precast

**Precast concrete construction demands chemicals to improve cycle times, clean and maintain formwork, and enhance concrete finishes.**

The range of Precast Chemical Solutions from Reid Construction Systems includes Release Agents, Sprayers, and Cleaning and Maintenance products to ensure overall costs are reduced whilst producing the highest quality Precast components.

Partnering with Nox-Crete, a leading manufacturer of Precast Chemical products, Reid Construction Systems offers trusted chemical solutions through performance-driven products.

As part of Reid Construction Systems, our Precast customers have access to the Ramset™ Chemical Anchoring range including Epcon™ and ChemSet™ Injection Adhesives, the leading Chemical Anchoring brands in Australia and New Zealand due to high quality, reliability and versatility.



**Biodegradable, water based, maximum performance concrete form Release Agent**

# NOX-CRETE Bio-Nox

**Biodegradable, water based, maximum performance concrete form Release Agent.**

Nox-Crete BIO-NOX is a water-based, 100% biodegradable high performance form Release Agent which chemically reacts with concrete to produce a slippery soap-like film that positively prevents bonding on concrete to form surfaces.

The formulation allows a high quality Precast finish, across several types of form surfaces, including highly textured architectural panels.

The 100% biodegradable formulation is free from conventional form oil, diesel oil or kerosene. It is a vegetable oil based emulsion is ideal for use on expensive rubber or latex formliners, as it does not degrade the surface from repeated use, producing beautiful, bright architectural panels.

It also reduces the likelihood of skin or odour irritations that can occur with petroleum based Release Agents.

Application with a Nox-Crete Perfect Sprayer system is highly recommended to get even application coverage and a quality result.



**Bio-Nox provides a clean crisp, clean architectural finish to concrete surfaces**

### Features & Benefits

- Water Based
- Combines methyl esters derived from corn and soybean oil with organic fatty acids
- Will not harm rubber or latex formliners
- Produces beautiful, bright white and void-free cast concrete surfaces
- Helps keep forms clean
- Incorporates a rust inhibitor to prevent flash rusting of steel forms
- Excellent emulsion stability
- Also incorporates an antioxidant to minimize the oxidation of applied films
- Readily biodegradable

### Uses

- Specifically designed for producing bright white architectural wall panels free of blemishes and discoloration
- Smooth, non-absorptive form surfaces
- Ideal for steel, fiberglass, plastic, rubber, latex forms and formliners and all non-absorptive overlaid forms

### Application Guidelines

For best results, it is recommended to apply Bio-Nox using the Nox-Crete Excel or Perfect spray system.

Form Surface or Concrete Finish Type	Spray tip	CF Valve	Coverage rates
Absorptive	8001	40psi	20 - 25 m <sup>2</sup> /L

### Packaging & Product Codes

Part No.	Size	Pack Qty
NOXBIO20	20L	each - Pail


### Related Products

Part No.	Description	Pack Qty
NOXPPS	Nox-Crete Perfect Form Sprayer	each – 15L
NOXCFVALVE40	Nox-Crete CF Valve 40 psi (Green/Blue)	each
NOXTIP8001	Nox-Crete Teejet Spray Tip 8001	each



**NOTE:**

Using the Nox-Crete Perfect sprayer is highly recommended to get the full potential of Bio-Nox. The sprayer recommendations have been derived specifically based on the products' material properties to ensure even coverage resulting in an exceptional and economical result.



**100% biodegradable formulation free of conventional form oil, diesel oil or kerosene.**



Solvent based Precast form Release Agent specifically formulated for use on dense, non-absorptive forms

# NOX-CRETE Release Agent #10

## Maximum performance Precast Release Agent for consistently high quality finishes.

Nox-Crete Release Agent #10 (RA#10) reacts chemically with the alkalis in concrete to form a soapy film which allows trapped air and excess water to escape during vibration, minimizing surface voids and providing a smooth, uniform concrete finish. When used on steel, it reacts with the iron present on the form surface to form a film that retards rust formation between pours.

It is ideally suited to high volume Precast works with excellent reproducibility of quality Precast finishes for wall panels, architectural wall facades, high relief textured panels as well as all other general Precast construction elements.

The solvent is chemically engineered to be effective even when applied via a very fine spray mist which allows very high coverage rates and excellent economy to busy Precast yards. The inherent rust inhibitor in the formulation suits high cycle frequency, keeping forms in excellent condition for longer and reducing build-up on the form surface. Application with a Nox-Crete Perfect Sprayer system is highly recommended to get very high efficiency coverage rates, resulting in an excellent finish.



Release Agent #10 used with optimum spray application

### Features & Benefits

- Solvent based
- Incorporates a blend of very fast-drying solvents
- Produces architectural, bright white void-free concrete surfaces
- Minimizes surface air voids (bugholes)
- Performs extremely well on steel and fiberglass forms
- Helps keep forms clean – breaks down and removes hardened concrete buildup through regular use
- Incorporates a rust inhibitor to prevent flash rusting of steel forms
- Has a high flash point (>60°C)

### Uses

- Wet cast applications requiring an architectural concrete appearance
- Smooth, non-absorptive form surfaces
- Ideal for steel, fiberglass, plastic and non-absorptive overlaid plywood forms

### Application Guidelines

For best results, it is recommended to apply Release Agent #10 using the Nox-Crete Excel or Perfect spray system.

Form Surface or Concrete Finish Type	Spray tip	CF Valve	Coverage rates
Absorptive	8001	40psi	25-35 m <sup>2</sup> /L

### Packaging & Product Codes

Part No.	Size	Pack Qty
NOXRA1020	20L	each - Pail
NOXRA10200	200L	each - Drum
NOXRA101000	1000L	Pod/Tote*

\* Special order/ non-stocked item – lead times apply. Contact your Reid Construction Systems representative for further information.

### Related Products

Part No.	Description	Pack Qty
NOXPPS	Nox-Crete Perfect Form Sprayer	each – 15L
NOXCFVALVE40	Nox-Crete CF Valve 40 psi (Green/Blue)	each
NOXTIP8001	Nox-Crete Teejet Spray Tip 8001	each



**NOTE:**

Using the Nox-Crete Excel sprayer is highly recommended to get the full potential of RA#10. The sprayer recommendations have been derived specifically based on the products' material properties to ensure even coverage resulting in an exceptional and economical result.



**High-performance form release agent creates architectural-grade surfaces.**

# NOX-CRETE Formcoating E20

**Noxcrete Formcoating chemically reacts instantly upon contact with wet concrete, preventing bonding.**

By-products of this chemical reaction waterproof timber forms, extending their life. When used on steel forms the reaction creates soaps minimizing the formation of rust.

Has been a proven performer since 1956, where it was the world's first chemically reactive release agent.



## Packaging & Product Codes

Part No.	Size	Pack Qty
NOXFORM-E20PRE	20L	Pail

## Related Products

Part No.	Desc	Pack Qty
NOXPPS	Nox-Crete Perfect Form Sprayer	each

## Advantages

- Release agent designed for use on most forms including timber, steel & plastic.
- Gives expectations & unduplicated results on timber forms.

## Applications

- Extends the life of timber and steel forms.
- Provides easy crisp release and eliminates the need for pry tools, minimizing the chance of stripping damage.
- Substantially reduces bug holes and will not stain concrete surfaces.
- Softens and removes thin scale of pre-existing concrete build up through repeated use.

## Precautions

- Waterbased, chemically active release agents are not visible on applied surface once dry.
- Do not use on plaster waste moulds.
- Do not use when forms are to be removed in less than 12 hours.
- Not intended to be used under freezing conditions; also prevent product packaging from freezing.
- Not recommended for application 2 hours before or in the rain.

## Use Instructions

- Product should be mixed well prior to each use
- Form surfaces should be dry & clean of build up, rust, mill scale and any pre-existing mould oil prior to application
- Spray applications is recommended using NOXCRETE PERFECT sprayer
- Apply in thin films to maximise performance. Excess product in the form of puddles should be mopped up.
- Typical application rate to semi porous timber is approx. 25m<sup>2</sup>/L; steel & plastic 75m<sup>2</sup>/l



# NOX-CRETE Silcoseal Select (solvent-based)

**Silcoseal Classic's traditional, solvent-based formulation allows tilt-up panels to separate easily and completely without the use of pry bars or wedges commonly used with membrane-forming bondbreakers.**

The solvent-based formula also dries faster than water-based formulations and isn't affected by high humidity.



## Advantages

- **Drying Speed:** Solvent-based cure and bondbreaker dries faster than water-based Bondbreakers is not affected by high humidity or low temperature.
- **Leaves No Trace:** Leaves no residue or resulting staining on wall panel or casting slab floor surfaces when properly applied.
- **Cost Effective To Use:** No wax or hydrocarbon resins means less chemical is needed per project, reducing application time and cost while ensuring exceptional results.

## Applications

- Use as a cure and bondbreaker in tilt-up, lift slab and precast concrete construction when weather conditions do not allow for the use of water-based products.
- Use to cure the top side of tilt wall panels to prevent the formation of shrinkage cracks.
- Use as a cure only on all types of interior, smooth troweled concrete where the use of conventional resin-based curing compounds is impractical.

## Packaging & Product Codes

Part No.	Size	Pack
NOXSILCOCLASS20	20L	Pail
NOXSILCOCLASS200	200L	Drum

## Precautions

- Not recommended for use as a bondbreaker on broom-finished or rough-finished concrete surfaces.
- Not recommended for application over or in conjunction with any other manufacturer's tilt-up bondbreaker.
- Not recommended for application 2 hours before or in the rain. Re-apply if required.
- Not recommended for application without the proper sprayer.

## Related Products

Part No.	Desc	Pack Qty
NOXPPS	Nox-Crete Perfect Form Sprayer	each

## Use Instructions

### Cure Coat Application

- Apply to the point of rejection and uniform surface film accumulation immediately after final finishing and joint saw cutting.
- The typical application range is 5-10m<sup>2</sup> per litre but can vary widely depending on specific conditions.

### Bondbreaker Application

- Remove all dust, dirt, saw cut residue, standing water and other contaminants prior to applying. Do not pressure wash the surface.
- The typical effective coverage rate for all combined bondbreaker coats applied to new casting slabs previously cured with SILCOSEAL SELECT is 15-25m<sup>2</sup> per litre. The number of coats and application rate vary widely depending on the specific conditions.
- An adequate application is indicated by the presence of a dry, soap-like feel uniformly apparent to touch over the entire treated area, with no indication of greater accumulations in low spots or depressions.

# NOX-CRETE Silco Seal Select (water-based)

**Silco Seal select is a water-based bondbreaker, which does not contain any wax or hydrocarbon resin.**

Silco Seal select contains chemically reactive organic compounds which react with calcium hydroxide present in concrete surface pours creating a seal. When properly applied, it prevents the bonding of tilt-up panels to themselves or the casting floor.

Moisture entry and exit is restricted, minimising concrete surface cracking. Silco Seal select complies with ASTM-C309 curing requirements.



## Advantages

- **Quality Panels:** achieves a crisp, positive release that minimizes panel surface defect and reduces panel resurfacing/patching costs.
- **Leaves No Trace:** Leaves no residue or resulting staining on wall panel or casting slab floor surfaces when properly applied.
- **Cost Effective To Use:** No wax or hydrocarbon resins means less chemical is needed per project, reducing application time and cost while ensuring exceptional results.

## Applications

- Use as a cure and bondbreaker in tilt-up, lift slab and precast concrete construction when weather conditions do not allow for the use of water-based products.
- Use to cure the top side of tilt wall panels to prevent the formation of shrinkage cracks.
- Use as a cure only on all types of interior, smooth troweled concrete where the use of conventional resin-based curing compounds is impractical.

## Packaging & Product Codes

Part No.	Size	Pack Qty
NOXSILCOSEL20	20L	each - Pail

## Related Products

Part No.	Desc	Pack Qty
NOXPPS	Nox-Crete Perfect Form Sprayer	each

## Precautions

- Not recommended for use as a bondbreaker on broom-finished or rough-finished concrete surfaces.
- Not recommended for application over or in conjunction with any other manufacturer's tilt-up bondbreaker.
- Not recommended for application 2 hours before or in the rain. Re-apply if required.
- Not recommended for application without the proper sprayer.

## Use Instructions

### Cure Coat Application

- Apply to the point of rejection and uniform surface film accumulation immediately after final finishing and joint saw cutting.
- The typical application range is 5-10m<sup>2</sup> per litre but can vary widely depending on specific conditions.

### Bondbreaker Application

- Remove all dust, dirt, saw cut residue, standing water and other contaminants prior to applying. Do not pressure wash the surface.
- The typical effective coverage rate for all combined bondbreaker coats applied to new casting slabs previously cured with SILCOSEAL SELECT is 15-25m<sup>2</sup> per litre. The number of coats and application rate vary widely depending on the specific conditions.
- An adequate application is indicated by the presence of a dry, soap-like feel uniformly apparent to touch over the entire treated area, with no indication of greater accumulations in low spots or depressions.

# NOX-CRETE Blast-Off

A powerful water based cleaning agent formulated to dissolve concrete buildup on heavy industrial equipment.

## Features & Benefits

- Contains a concentrated organic acid derived from sugar cane and sugar beets
- Extremely fast-acting formula quickly dissolves concrete splatter and hardened build-up
- Small molecular size allows deep penetration into the heaviest build-up
- Water based and readily biodegradable (90% in 7 days)
- Contains no mineral acid and is odour free
- Produces a thick, rich foam that clings to vertical and overhead surfaces for increased effectiveness
- Will not corrode steel, aluminium, magnesium, copper or damage plastic, fiberglass or rubber surfaces
- Requires use of a Nox-Crete Pump Foamer
- Vivid pH-sensitive purple dye indicates product is still working

## Uses

- Use on aluminium, steel, plastic, fiberglass, glass, rubber or painted metal surfaces
- Removes build-up and splatter on drum mixers, forms, paving machines, concrete pumps, screeds and more
- Can also be used to remove mortar splatter, efflorescence and other calcium based salt deposits from concrete masonry surfaces
- Excellent for small hand tools as well as heavy industrial concrete equipment

## Product Information

Nox-Crete BLAST-OFF contains powerful naturally derived molecules which are extremely effective at dissolving concrete build-up and splatter without damaging or corroding exposed steel, chrome, aluminium or electrical components. Eliminates costly damage resulting from the use of sandblasters or chipping hammers, increasing the life of expensive capital equipment. It is water based and readily biodegradable allowing it to be used and disposed of safely on several work sites.

## Application Guidelines

Ready to use formulation. Best results are achieved by using a pump foamers such as Nox-Crete Pump Foamer. This will produce a thick, rich foam that will cling to the steel surface allowing the product to work effectively. The pH sensitive dye indicates that BLAST-OFF is actively dissolving hardened concrete buildup, turning white when finished, allowing the user to see when the reaction is neutralized and can be easily rinsed off.

Remove softened concrete with a garden type spray nozzle of a pressure washer for removal of heavier buildup. Occasionally re-application or longer soaking times may be required for particularly heavy build-up.



Before application



After application

## Packaging & Product Codes

Part No.	Size	Pack Qty
NOXBLAST20	20L	each - Pail

## Related Products

Part No.	Desc	Pack Qty
NOXFOAMPUMP	Nox-Crete Pump Foamer	each

# NOX-CRETE SPRAYER SYSTEMS

High quality, robust sprayers to maximise chemical delivery and performance.

## Sprayer System Selection Guide

	Sprayer System	Product	Spray Tip	Environment	Application
Precast	NOXPERFECT	BIO NOX. RA #10 FORMGUARD TJ	8001	Semi-exposed/ Outdoor Precast facility	Steel Beds / Railway Sleepers/ Frequent stripping/ semi-absorbent formwork
Maintenance	NOXPERFECT	FORMGUARD TJ	80005 8001	Indoor/ Outdoor	Steel formwork
	NOXFOAMPUMP	BLAST-OFF, KEM-EX-IT	N/A	Indoor/ Outdoor	Formwork and concrete equipment



## NOX-CRETE Perfect Concrete & Form Sprayer

### Product Information

The Nox-Crete PERFECT Concrete and Form sprayer is a heavy duty stainless steel sprayer for Precast, tilt-up and concrete construction sites. It can be hand pumped or air-charged to 6.2 bar (90 psi), making it a versatile and robust sprayer on large construction sites and tilt up yards for the delivery of form release agents and chemical bond-breakers.

### Features & Benefits

- Gun-style handle and trigger
- 2.8 bar (40 psi) control flow (CF) valves maintain constant pressure for consistent spray flow
- Heavy-duty, 15L stainless steel tank
- 1.5 m (5 ft.) chemical-resistant hose with swivel

### Uses

- Application of Nox-Crete form release agents and bond-breakers
- Recommended for Precast and tilt up yards, as well as construction sites
- Can be hand pumped or air charged



## NOX-CRETE Hand Pump Foamer

### Product Information

The Nox-Crete Hand Pump Foamer is ideal for the application of cleaning and maintenance chemicals such as Nox-Crete BLAST-OFF and Nox-Crete KEM-EX-IT Plus. It produces a thick, rich foam which clings to vertical surfaces allows greater dwell time on the surface of the form, allowing the chemicals to produce excellent results.

### Features & Benefits

- Delivers thick, rich foam to maximize Blast-Off & Kem-Ex-It Plus effectiveness by extending dwell time, even on vertical surfaces
- Viton® seals for extended durability
- Wide mouth and funnel cup for easy filling
- Heavy-duty polypropylene, 7.5L (2.0 gal) tank and gun assembly



### Related Products

Part No.	Description	Pack Qty
NOXCFVALVE40	Nox-Crete CF Valve 40 psi	each
NOXTIP8001	Nox-Crete Teejet spray tip 8001	each
NOXSERVICE-PF	NoxPerfect Spare Part kit	each

### Packaging & Product Codes

Part No.	Size	Pack Qty
NOXPERFECT	15L	each
NOXFOAMPUMP	7.5L	each

**NOTE:**

Using the complete nox-crete sprayer system is highly recommended to achieve the full potential of nox-crete form release agents and maintenance chemicals. The sprayer recommendations have been derived specifically based on the product material properties to ensure an exceptional and economical result.

# Formwork System

The Spartan™  
Formwork System  
brings innovative,  
smart technology to  
the pre-cast yard which  
allows imagination  
the freedom of full  
expression in the  
physical structure

Central to the Spartan™ Formwork System is the Titan™ Magnet Clamp and Spartan™ Sideform which provide unparalleled levels of accuracy, flexibility, efficiency and safety to pre-cast yards.

Smarter.

Easier.

Stronger.

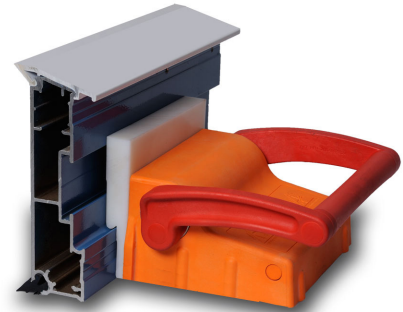
Safer.

# Spartan™ System

## Spartan is the complete Precast Formwork solution.

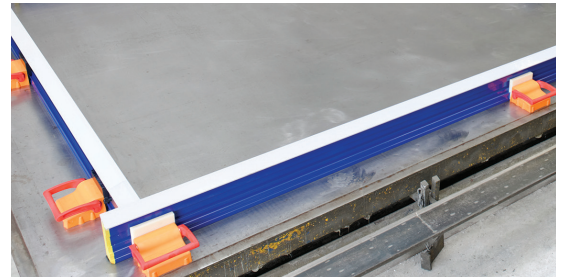
The Spartan Formwork System brings innovative, smart technology to the precast yard and allows imagination the freedom of full expression in the physical structure.

Central to the Spartan™ Formwork System is the Titan™ Magnet Clamp and Spartan™ Sideform. Together, these products provide unparalleled levels of accuracy, flexibility, efficiency and safety to precast yards.



### Smarter.

Spartan™ Sideform is the only system that enables precasters the flexibility of incremental changes in height with the simple change-over of capping.



### Easier.

The Spartan™ Rubber Base Insert provides a silicone-free seal between the bed and formwork to prevent concrete bleed – eliminate the material and labour costs associated with the silicone application and removal processes.



### Stronger.

Spartan™ Sideform is manufactured from ultra lightweight, high-grade 6082 and 6005A Aluminium Alloys which provides durability and strength. Spartan™ Sideform will not bend or buckle and can withstand job site use and abuse. The Titan™ Magnet Clamp is the industry's most powerful. It's ultra compact design saves space and enables precasters to maximise the working area of a steel bed.



### Safer.

The Titan™ Precast Magnet Clamp's de-magnetising plate safely secures the magnet to prevent it from unexpectedly engaging on the steel bed – minimizing the risk of fingers or other limbs being caught under the magnet. Spartan™ Sideform's innovative aluminium design is significantly lighter than traditional steel formwork, improving OH&S and making it much safer to use.

# Spartan™ Sideform

The patented Spartan Sideform is manufactured from a unique combination of composite materials and offers a multitude of benefits over traditional steel or wood formwork.

**Lightweight:** Spartan Sideform is significantly lighter than steel formwork reducing any potential OH&S issues.

**Thick wall sections:** Sideform will not bend or buckle. Thick wall sections provide for proper screw bite when fixing fittings to the sideform.

**Centre line marking:** Spartan Sideform provides a horizontal line-of-centre to assist with the alignment or positioning of fittings.

**Easy to Clean:** Powder coated Spartan Sideform can be easily cleaned and is protected against the elements.

- Magnet Securing Rail on the rear of Spartan Sideform does not allow concrete to become wedged and is easily removed.
- Sideform is colour-coded to reflect the variations in height.
- Spartan Sideform accommodates interchangeable top capping for height and profile flexibility.
- The Spartan Sideform also houses the unique Rubber Base Seal which prevents concrete bleed without the need for use of silicone

## Product Codes

Part No.	Colour	Dimensions (LxH)	Weight
SF125	Green	5.8m x 125mm	17.69
SF150	Grey	5.8m x 150mm	19.95
SF175	Blue	5.8m x 175mm	22.38
SF200	Burgundy	5.8m x 200mm	24.65
SF250	White	5.8m x 250mm	33.90
SF300	White	5.8m x 300mm	38.60



# Spartan™ Sideform Rubber End Caps

Spartan End Caps provide a silicone free join between sideform sections, preventing concrete bleed through gaps in temporarily joined sideform.

Likewise, the Spartan End Caps plug the ends of the sideform, preventing any concrete from filling the internal cavities.

The Spartan Sideform End Caps now feature a taper or draft which makes stripping of both internal and external corners even easier!

## Product Codes

Part No.	Suits
SFEC150	SF150 Sideform - Left and Right Pair
SFEC175	SF175 Sideform - Left and Right Pair
SFEC200	SF200 Sideform - Left and Right Pair
SFEC250	SF250 Sideform - Left and Right Pair
SFEC300	SF300 Sideform - Left and Right Pair



# Spartan™ Sideform Capping

The Spartan Sideform Capping provides precasters with the flexibility to change sideform height and profile without the need to invest in entirely new sideform.

Available in 6 sizes ranging from +0mm to +25mm in 5mm increments, the Spartan Top Cap simply snaps on to the sideform, and snaps off as required.

## Square – 12 x 12 Profile Product Codes



Part No.	Colour	Dimensions (LxH)
CAPSQ00	Light Grey	3m x 0mm

## Chamfer – 12 x 12 Profile Product Codes



Part No.	Colour	Dimensions (LxH)
CAPC12	Grey	3m x 0mm
CAPC1205	White	3m x 5mm
CAPC1210	Green	3m x 10mm
CAPC1215	Burgundy	3m x 15mm
CAPC1220	Orange	3m x 20mm
CAPC1225	Navy	3m x 25mm

# Spartan™ Rubber Base Inserts

Not all steel beds are perfectly flat and small gaps do appear between the underside of the sideform and the bed. These can cause concrete bleed or seepage. Traditionally, a bead of silicone is used between the sideform and the steel bed - a labour intensive and cost prohibitive exercise.

## Product Codes

Part No.	Profile	Colour	Lengths
BIC12	12mm Chamfer	Black	6m
BICSQ	Square	Black	6m



# Titan™ III Magnet Clamp

The Titan™ III patented Precast Magnet is Australia's strongest magnet for its size and is significantly smaller than other commercially available magnets:

**Smaller and lighter:** Weighs just 4.1kgs

**Stronger:** Up to 1,800kgs of pull-down force!

**Rubber Base Skirt:** Fully seals the underside of the housing to protect against dirt, metal particles and other contaminants. The Rubber Skirt also minimises the possibility of fingers or limbs being caught under the magnet.

**De-magnetising Plate:** Safely secures the magnet to prevent it from unexpectedly engaging against the steel bed.

**Easy to Clean:** Concrete does not stick to the magnet's plastic housing, making it quick and easy to clean.

**Durable:** The 8mm reinforced plastic housing is job site tough!

Reid™ recommends the use of water based release agents.



## Product Codes

Part No.	Colour	Dimensions
MAG3	Orange/Red	140mmL x 155mmW x 85mmH

# Titan™ Magnet Adapter Plates

The Titan range of Magnet Adapter Plates are the crucial link in the Spartan Formwork System, enabling quick and easy interchangeability of the magnet between sideform of varying size.

## Product Codes

Part No.	Suits	Dimensions (LxWxH)
MAP125	SF125	145 x 20 x 85mm
MAP150175	SF150 & SF175	145 x 20 x 110mm
MAP200	SF200	145 x 20 x 160mm
MAP250	SF250	140 x 30 x 170mm
MAP300	SF300	140 x 30 x 220mm
MAPSF	All SwiftForm Sideform	144 x 20 x 85mm



## Spartan™ Sideform Joiner Plates

Spartan Joiner Plates are used for temporary or semi-permanent joining of sideform and used for joining the Spartan Internal Corner system.

Part No.	Colour	Suits
SFJP150200	Silver	SF150, SF175, SF200, SF250, SF300



### NOTES:

---



---



---



---



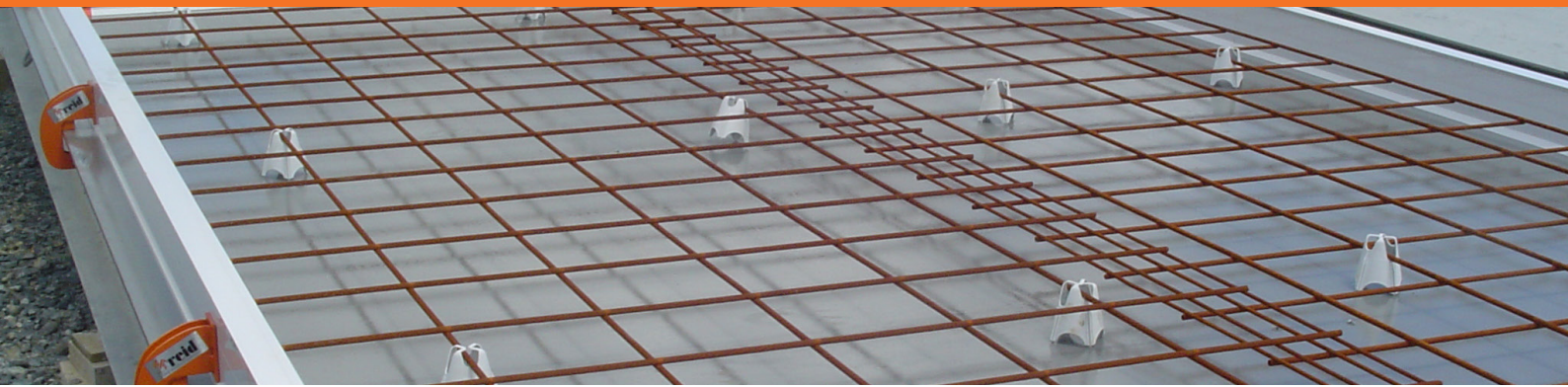
---



---



---



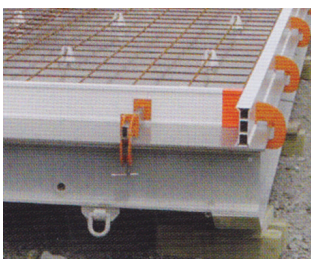
# SwiftForm™

**SwiftForm is a compatible multi-component system specifically for high quality precast manufacture, and is designed to be used in conjunction with steel modular casting beds.**

Its extruded epoxy-coated aluminium profile sections have a choice of two fillet sizes, magnets and a range of accessories to produce high quality panels with increased efficiency at lower costs and reduced labour time.

## SwiftForm Features & Benefits

- Compatible multi-component system designed specifically for New Zealand's pre-cast and tilt up markets.
- Removes the need and cost of replaceable plastic fillet strips.
- Provides a far superior edge on finished panel.
- Substantially reduces boxing time and labour.
- Designed to be compatible with steel modular casting beds.
- Plastic plug can be cut out on-site to suit requirement, with standard mitre saw.



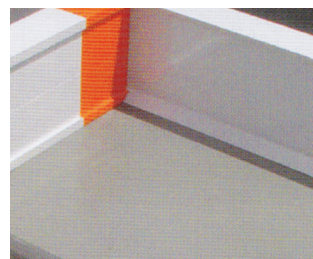
### lightweight

SwiftForm™ aluminium formwork is significantly lighter than traditional steel formwork, improving OH&S and making it much safer to use.



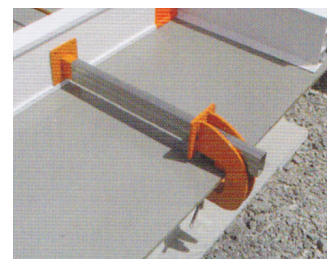
### easy to use

The Reid™ SwiftForm™ system is quick and easy to use. Formwork is easily cut to size on site. Magnetic clamps are easily located on the rear of the sideform and can be quickly engaged and or disengaged to allow for positional adjustment.



### accurate

SwiftForm™ End Caps can be easily attached or removed and are designed to perfectly fit the profile of the aluminium sideform, enabling fast and accurate set up of external corners.



### versatile

SwiftForm™ can now be used with Spartan MAG3 magnets; significantly increasing the strength of the magnet, meaning less are required on each pour.

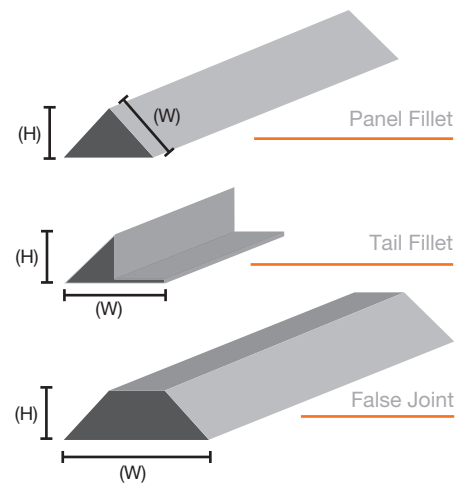
## Aluminium Extruded Profile Section

Part No.	Description	Qty (per Length)	Pack Qty
SWREIDFRM150E	150mm Extruded Profile Section with Molded in Fillet with 15mm Fillet	6.04	10
SWREIDFRM175E	175mm Extruded Profile Section with Molded in 5mm radius.	6.04	10
SWREIDFRM200E	200mm Extruded Profile Section with Molded in Fillet with 15mm Fillet	6.04	10



## Reid™ Extruded Sections

Part No.	Description	Nom Size (W x H) (mm)	Length (mm)	Pack Qty
FILLET12S	Panel Fillet	12 x 12	3000	25
FILLET15S		15 x 15	3000	25
FILLET17S		17 x 17	3000	25
FILLET12T	Tail Fillet	26 x 12	3000	25
FILLET15T		37 x 15	3000	25
MOCK12	False Joint	12 x 40	3000	10
MOCK15		15 x 40	3000	10
MOCK 17		17 x 50	3000	10



## Sealant

Part No.	Description	Pack Qty
FMSLG300	Silicone for Precasters - 300ml Cartridge	12



# Architectural Solutions

The ability of reinforced concrete to take virtually any shape that an architect can visualise is probably the single most important characteristic that has made it a dominant construction material of the modern age.

Our Architectural Solution bring together a stable of innovative architectural systems and technologies which are sustainable and cost-effective.





© graphic concrete®

graphic concrete® offers a new way to produce a patterned concrete surface. The patented technology involves applying a surface retarder to a special membrane.

The pattern on the concrete surface results from the contrast between the smooth face and the exposed aggregate finish.

Choose a pattern from an existing Graphic Concrete collection, or design your own.

# Graphic Concrete

graphic concrete® offers a new way to produce a patterned concrete surface. The patented technology involves applying a surface retarder to a special membrane. The pattern on the concrete surface results from the contrast between the smooth face and the exposed aggregate finish.

Choose a pattern from an existing Graphic Concrete collection, or design your own.

# © graphic concrete®

## What is graphic concrete?

Graphic Concrete provides technology for architects in the design process and for the prefabrication concrete industry to manufacture high-quality patterned concrete surfaces. Builders use these surfaces in industrially produced façades, floors and inner walls.

graphic concrete is a patented technology invented by interior architect Samuli Naamanka. The technology is a proven concept within the precast concrete industry.

An extensive number of completed projects from all over the globe demonstrate the vast range of designs in which architects can use graphic concrete: public, residential and industrial. When an architect decides to use graphic concrete in the design of a concrete surface, the visual quality of the traditional surface is radically altered.

## How does graphic concrete work?

graphic concrete technology is the printing of a surface retarder on a special membrane. Concrete is cast on top of the membrane and the retarder slows the setting (hardening) of the concrete in the selected areas. The unset, softer concrete surface is high pressure washed, revealing the fine aggregate finish.

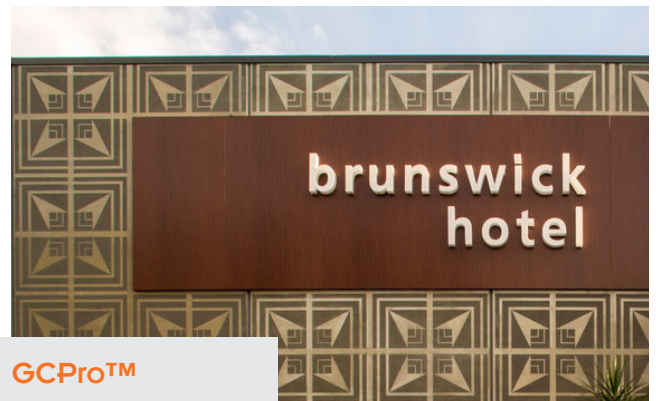
The actual pattern on the surface of the concrete then results from the contrast between the smooth finish and the aggregate. Colour pigments can be added to white cement and aggregates of different colours can be used.

Casting of the concrete elements takes place in a precast yard. The membranes printed by Graphic Concrete Ltd are available from Reid and are delivered to the precaster whom is specifically chosen for the project by the architect, developer or builder.

**More freedom and options for architects: graphic concrete allows you to use concrete in new and stylish ways; add the desired effect to a concrete surface by selecting a pattern from one of the Graphic Concrete collections, or develop your own unique design.**



GCArt&Design™



GCPPro™



GCSmooth™



GCCollection™

# Graphic Concrete® Gallery

**Four different ways to use graphic concrete.**

GCCollection comprises almost a hundred ready-made repeating patterns that can be customized and scaled according to the designer's wishes to create a unique look. Designers can also create their own repeating pattern, which we call GCPPro. To create large designs using photographs or other non-repeating patterns, we offer GC&Design. Finally, GCSmooth offers a beautiful velvety smooth and even concrete surface without a pattern.

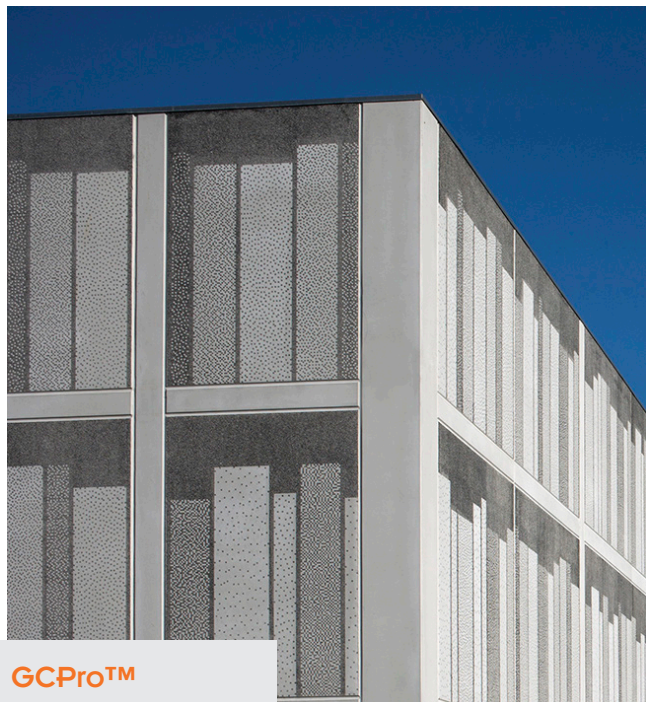


**GCCollection™**



**GCPPro™**

GCPPro™ represents unique patterns designed by architects and designers. These patterns are exclusive, designed to match a specific project bringing the design all the way to the concrete surface.

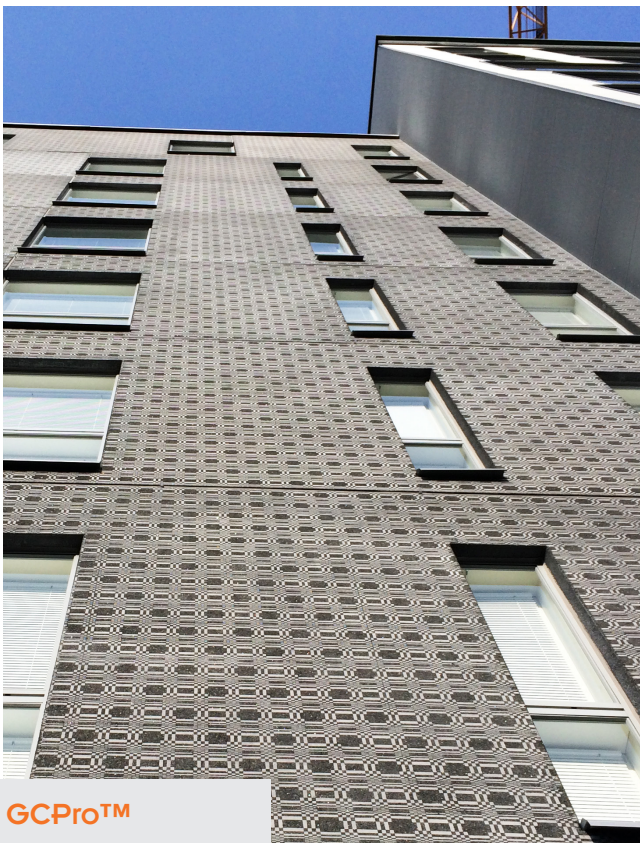


**GCPPro™**



GCArt&Design™

More freedom and options for architects: graphic concrete allows you to use concrete in new and stylish ways; add the desired effect to a concrete surface by selecting a pattern from one of the Graphic Concrete collections, or develop your own unique design.



GCPPro™



GCCollection™



GCCollection™

© graphic concrete®

## customer service

### Reid™ Australia

Tel: 1300 780 250  
Email: [sales@itwcsanz.com](mailto:sales@itwcsanz.com)  
Web: [www.reid.com.au](http://www.reid.com.au)

---

### Reid™ New Zealand

Tel: 0800 88 22 12  
Email: [sales@ramsetreid.co.nz](mailto:sales@ramsetreid.co.nz)  
Web: [www.reids.co.nz](http://www.reids.co.nz)

---

#### Reid™

AUS: 1 Ramset Drive, Chirnside Park, Victoria, Australia, 3116  
NZ: 23-29 Poland Road, Glenfield, Auckland 0632

Information in this document is correct at the time of printing. Readers should contact Reid or consult Reid detailed technical information to ensure product is suitable for intended use prior to purchase. ITW Australia Pty Ltd ABN 63 004 235 063 trading as Reid © copyright 2026. ™ Trademarks of Illinois toolworks Ltd. Used under license by Reid

**Important Disclaimer:** Any engineering information or advice ("Information") provided by Reid in this document is issued in accordance with a prescribed standard, published performance data or design software. It is the responsibility of the user to obtain its own independent engineering (or other) advice to assess the suitability of the Information for its own requirements. To the extent permitted by law, Reid will not be liable to the recipient or any third party for any direct or indirect loss or liability arising out of, or in connection with, the Information. None of the products listed in this document are subject to a warning or ban under the Building Act 2004.

