



THE REVOLUTION IN STRUCTURAL CONNECTIONS








“ORBIPLATE TAKES THE PAIN OUT OF CONSTRUCTION CONNECTIONS:

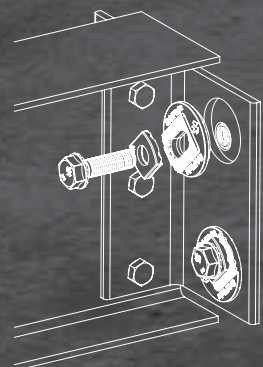
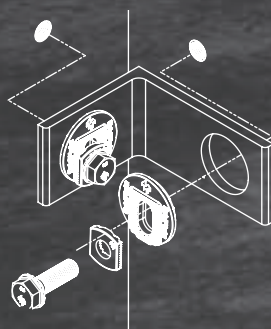
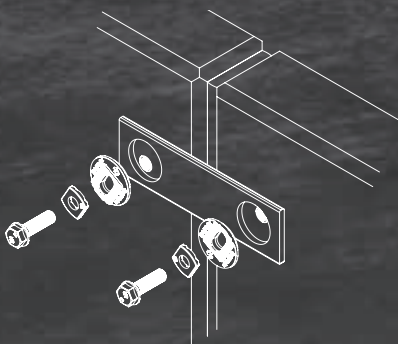
NO MISALIGNMENT,

NO HOT WORK,

NO DELAYS.”

**NO MATTER WHERE YOU ARE IN THE CONSTRUCTION PROCESS,
ORBIPLATE™ WILL SAVE YOU TIME AND MONEY.**

Engineer Architect 	Precast Factory 	Builder Steel Erector 
Avoid call outs to solve erection problems	Quicker and cheaper than cast-in plate connections	Faster erection
Millimeter adjustable connections	Forget site rework & complaints when cast-in ferrules are out of position up to 20mm	Prevent delays caused by misalignment in connections
Available in Zinc & Gal finish	Prevent delays waiting for imported cast-in solutions	Eliminate hot work
Neat (flush fitting)	Reduce congestion between reinforcing and cast-in components	Avoid the drilling required to use post-installed anchors





PRODUCT DESCRIPTION

OrbiPlate™ overcomes the major headache that comes with bolted connections, getting the holes to line up! The methods traditionally used to overcome this were time consuming, costly and often structurally inadequate.

The patented OrbiPlate™ system is used when connecting steel to steel or steel to concrete elements and delivers connection tolerances of up to 20mm around the centre of the connection. It also provides the ability to achieve fine locational accuracy when positioning each steel member.

OrbiPlate™ is made from high tensile steel with a choice of Zinc Plated or Hot Dip Galvanised finishes. It comprises of a main washer with an elongated slot surrounded by serrated teeth that provide the effective mechanical lock with a secondary, smaller washer used to position the main structural bolt as required.

OrbiPlate™ is quick and easy to install. The steel member is supplied to site with a pre-formed hole (70mm), which can be punched or cut at the centre of the connection location. The main washer is then placed over the hole, rotated to locate the slot over the ferrule, then secured using the class 8.8 bolt through the small washer. The bolt can be positioned anywhere along the elongated slot, providing up to 20mm tolerance in all directions.


FEATURES

- Utilises readily available Reid Elephant Foot ferrules for steel to concrete connections.
- OrbiPlate™ is made from high tensile steel
- Zinc Plated or Hot Dip Galvanised finishes
- It is comprises of 2 washers (one large and one small) and is supplied with either a M16 & M20 class 8.8 bolt
- Capacity is limited to either the ferrule cast into the concrete or the class 8.8 bolt*.

ADVANTAGES

- No lost time
- No hot work, either blowing out holes or welding
- No call outs when connections don't line up
- OrbiPlate™ locks in place.
- Fine positional adjustment allows accurate positioning of each steel member.
- Orbiplate™ provides a high capacity structural connection*.

* Refer to the OrbiPlate Engineer's Design Guide for design capacities for both steel to concrete & steel to steel applications.



Class 8.8 Bolt
(either M20 or M16)

High capacity and suits use with
Elephant Foot Ferrule

Provides $\pm 20\text{mm}$ positional
tolerance

No rework or call outs when
connections don't line up.

Millimetre adjustable

Allows accurate positioning of
each steel member

Available in Zinc or HDG finish

Suitable for indoor and outdoor
applications

High Tensile Alloy Steel
Washers

High Capacity, exceeding ferrule
or bolt.

OrbiPlate locks into fixture plate

No rotation or movement under
shear load.



Holes not lining up...



TWIST IT



SLIDE IT

INSTALLATION

OrbiPlate is quick and easy to install.

The steel member is supplied to site with a pre-formed hole (70mm), which can be punched or cut at the centre of the ferrule location.

The main washer is then placed over the hole, rotated to locate the ferrule, then secured using a metric bolt which can be positioned anywhere along the elongated slot, providing up to 20mm tolerance in all directions. (AS3850 states that the total accumulation of tolerances shall not be greater than 20mm).

Secure the connection with the class 8.8 bolt and walk away



FIX IT

ASSEMBLY

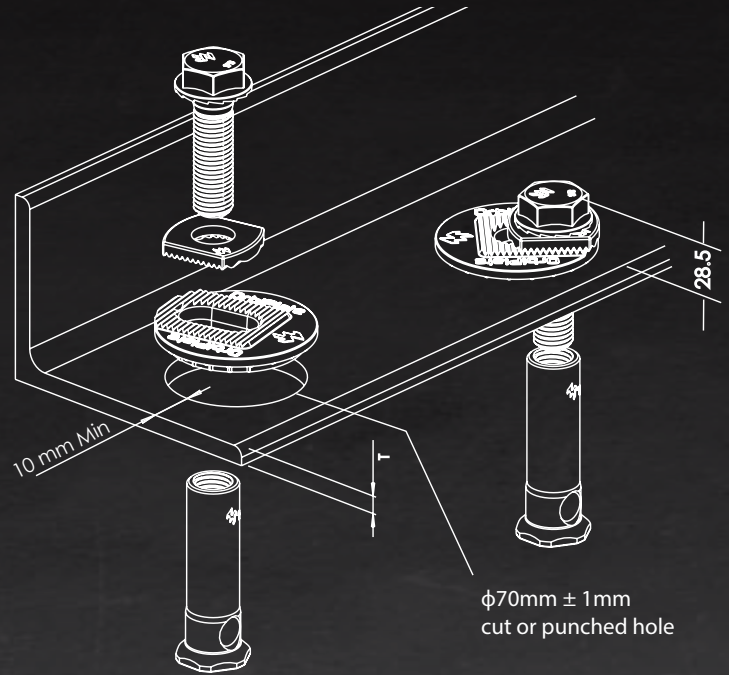
OrbiPlate fits into a pre-formed hole in steel component
(diameter 70mm ± 1mm)

AUSTRALIA

Size	Part Number	Finish	Matching Ferrule	Fixture Thickness
M20	ORB2020B	Zinc	FE20095	6 - 16mm
	ORB2020BGH	HDG	FE20095GH	6 - 16mm
M16	ORB2016B	Zinc	FE16095	6 - 12mm
	ORB2016BGH	HDG	FE16095GH	6 - 12mm

NEW ZEALAND

Size	Part Number	Finish	Matching Ferrule	Fixture Thickness
M20	ORB2020BGH	HDG	TIM20X75G	10-16mm



WORKING WITH YOU RIGHT FROM THE START

Reid services extend beyond the provision of leading technical expertise and advice on concrete reinforcing, and all facets of precast panel lifting and bracing. We work in partnership with our clients to develop new products and systems designed to significantly improve manufacturing and site efficiencies, as well as safety and profitability for our customers.

Our national coverage ensures that we can provide direct on-site assistance anywhere in Australia within hours.

Reid...the only name you need to know. Can you afford anything less?

LEADING THE INDUSTRY IN PRODUCT INNOVATION

Reid™ has been providing solutions to the concrete construction sector for over 40 years and our knowledge of the industry has enabled us to evolve into a company that is a leader in product innovation and service. Our national engineering team is available to help solve your concrete construction challenges – from concept to completion.

 www.reid.com.au
sales@reid.com.au
1300 780 250

 www.reids.co.nz
sales@reids.co.nz
0800 88 22 12



© Copyright 2015 Reid™. All information contained in this document is correct at time of printing but is subject to change without notice.
No portion of this document may be copied or reproduced in any manner including print or electronic without the express written consent of Reid™

Reid, Ramset, SwiftLift, JAWS, ReidBar, ReidBox, ReidNut, Elephant Foot, Stiletto, StudRail, ReidBrace, EdgeMaster, BraceSet, PA1 are trademarks of ITW Construction Systems Australia Pty. Ltd. ABN 48 004 297 009 t/a Reid™.
Part no. REIDORBI2015