

## ReidBar™ iPort Flange Anchor System



### New ReidBar™ iPort Flange Anchor System is available in NZ.

The ReidBar™ iPort Flange Anchor provides a compliant headed anchorage solution with improved epoxy injection, supporting increased quality control, safe handling of epoxy and simplified labour efficient installation.

### What has changed?

Reid™ Construction Systems are excited to introduce our new product, the ReidBar™ iPort Flange Anchor, which builds upon the proven success of the existing ReidBar™ Steel Flange Nut.

Acting on industry feedback regarding the existing system, it was found the ReidBar Steel Flange Nut was limited in its ability to cleanly deliver the epoxy between the bar and fitting, often resulting in excess epoxy residue as the fitting was wound down onto the reinforcing bar. As such, it was often held to end of bar anchorage applications, to minimise site mess & clean-up.



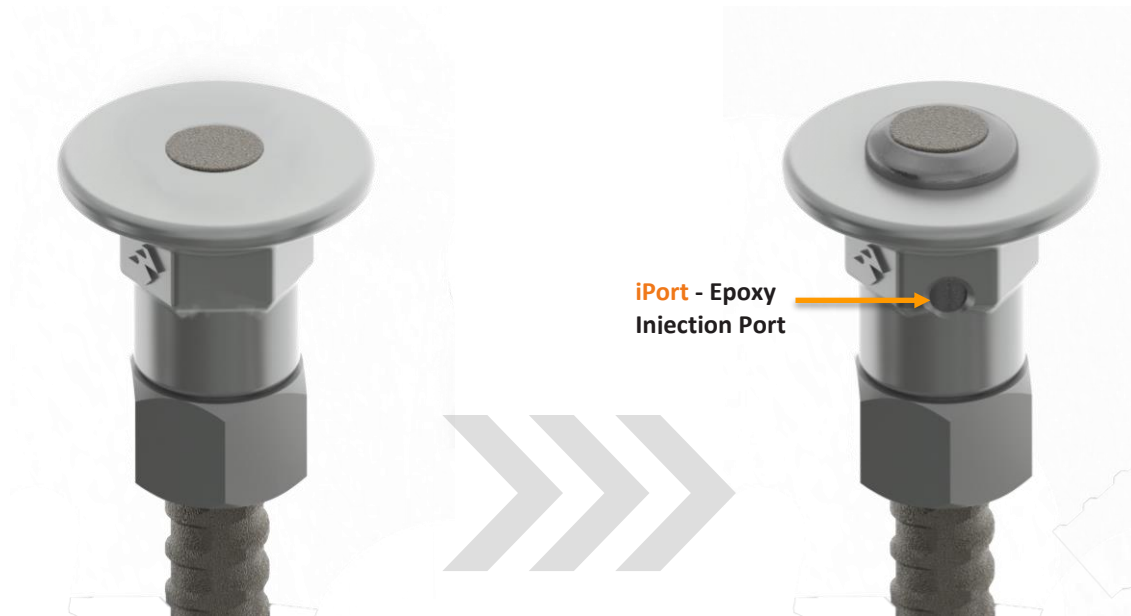
The iPort feature of the new ReidBar™ Flange Anchor system overcomes this issue by allowing the epoxy to be added after the fitting has been threaded onto the bar, resulting in a simpler, cleaner, and more efficient installation process. The iPort epoxy delivery system provides a visual indicator of installed quality. This innovative feature also allows for the headed anchorage fitting to be placed anywhere along the fully threaded reinforcement bar cleanly, providing greater flexibility in design and construction.

In terms of structural anchoring performance, the ReidBar iPort Flange Anchor retains all the structural characteristics of the previous ReidBar Steel Flange Nut. When used in conjunction with the ReidBar™ Half-Nut, Ramset™ Epcon™ C8 Xtrem™ Epoxy & Genuine ReidBar™ reinforcing, it forms a comprehensively 3<sup>rd</sup> party tested system in conformance with the requirements of:

- NZS 3101 Amendment 3
- NZTA Bridge Manual 3rd Edition Amendment 4.



May | 2023



Existing ReidBar™ Flange  
Nut & Half-Nut System

New ReidBar™ iPort Flange  
Anchor & Half-Nut System

## Converting from the existing ReidBar™ Flange Nut to the new ReidBar™ iPort Flange Anchor:

### Support Tools in place to help you make the change...

- Where the existing ReidBar™ Steel Flange Nut has been specified by a suitably qualified & experienced person, the ReidBar iPort Flange Anchor can be directly substituted in its place.
- Compliance document available on our website: [www.reids.co.nz/product/reidbar-iport-flange-anchor](http://www.reids.co.nz/product/reidbar-iport-flange-anchor)
- 3<sup>rd</sup> Party Testing & Validation to relevant NZ standards.
- **Compatibility:** A System approach – utilising continuously threaded Genuine ReidBar™. A hot rolled Grade 500E reinforcing bar manufactured in New Zealand in accordance with AS/NZS 4671:2019.
- 5 x sizes available in both Black & Galv. finish, to suit the full Genuine ReidBar™ range.
- **Pricing:** We have worked closely with our R&D & product supply teams to minimise the cost impact of this innovation on our customers. Please reach out to us for your new account rates.
- **Support when you need it:** Tap into the Reid team's know-how, to help you specify, or install the new iPort Flange Anchor. The move to the new iPort Flange Anchor could not be any simpler!

May | 2023

## Product Code & Description Changes:

### Existing Steel ReidBar™ Flange Nut Range *(Phase out)*

Product Code	Description
RB12FNS	12mm ReidBar Steel Flange Nut (Black)
RBA16FNS	16mm ReidBar Steel Flange Nut (Black)
RBA16FNSG	16mm ReidBar Steel Flange Nut (Galv.)
RB20FNS	20mm ReidBar Steel Flange Nut (Black)
RB20FNSG	20mm ReidBar Steel Flange Nut (Galv.)
RB25FNS	25mm ReidBar Steel Flange Nut (Black)
RB25FNSG	25mm ReidBar Steel Flange Nut (Galv.)
RB32FNS	32mm ReidBar Steel Flange Nut (Black)
RB32FNSG	32mm ReidBar Steel Flange Nut (Galv.)



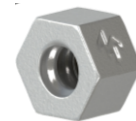
### (NEW) ReidBar™ iPort Flange Anchor Range

Product Code	Description
RB12FAIPS	12mm ReidBar iPort Flange Anchor (Black)
RB12FAIPSG	12mm ReidBar iPort Flange Anchor (Galv.)
RBA16FAIPS	16mm ReidBar iPort Flange Anchor (Black)
RBA16FAIPSG	16mm ReidBar iPort Flange Anchor (Galv.)
RB20FAIPS	20mm ReidBar iPort Flange Anchor (Black)
RB20FAIPSG	20mm ReidBar iPort Flange Anchor (Galv.)
RB25FAIPS	25mm ReidBar iPort Flange Anchor (Black)
RB25FAIPSG	25mm ReidBar iPort Flange Anchor (Galv.)
RB32FAIPS	32mm ReidBar iPort Flange Anchor (Black)
RB32FAIPSG	32mm ReidBar iPort Flange Anchor (Galv.)



### Existing ReidBar™ Half-Nut Range *(For continued use in new system)*

Product Code	Description
RB12NHG	12mm ReidBar Half Nut (Galv.)
RBA16NHG	16mm ReidBar Half Nut (Galv.)
RB20NHG	20mm ReidBar Half Nut (Galv.)
RB25NHG	25mm ReidBar Half Nut (Galv.)
RB32NHG	32mm ReidBar Half Nut (Galv.)



Should you have any questions relating to the new iPort Flange Anchor, please contact your local Reid™ representative. Alternatively, our Customer Service team can be contacted on: **0800 882 212** or emailed via [sales@ramsetreid.co.nz](mailto:sales@ramsetreid.co.nz)

Regards,

**Glen Taylor**  
Product Manager ANZ  
Reid Construction Systems